



## Cremer Street, E2

£2,800 Per calendar month

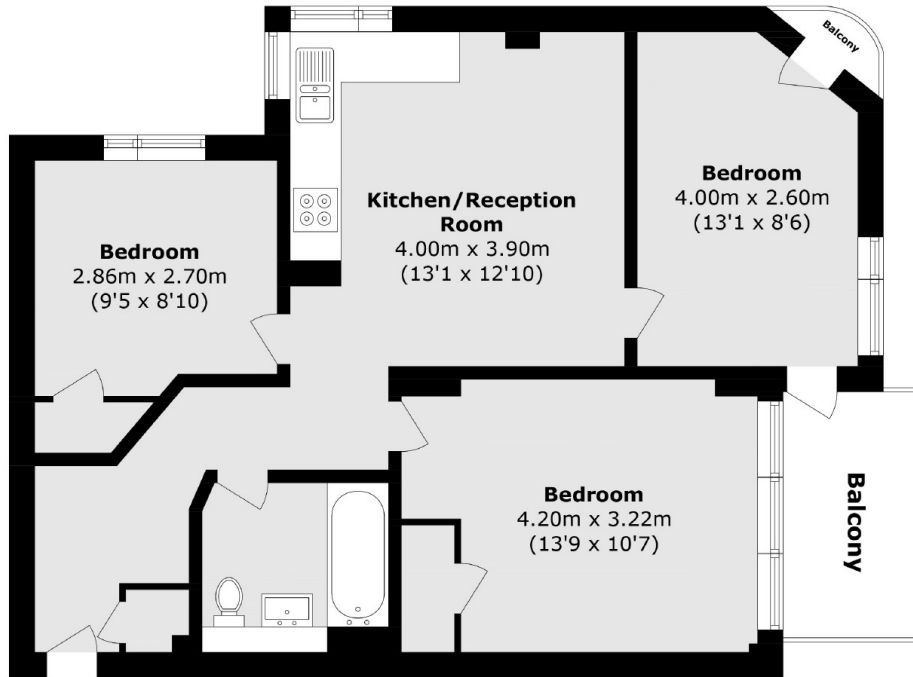
A three bedroom property in a secure block. This apartment has three double bedrooms, an open plan living area, wooden floor throughout and comes with two separate balconies.

The property is located a short distance to Hoxton overground as well as being close to all the local bars, cafes and restaurants of Shoreditch and Old Street.

### Features

- Three Bedrooms
- Open Plan
- Two Balconies
- Secure Block
- Great Transport Links
- Great Location

Cremer Street,  
London, E2



Total area (approx.): 61.8 sq. m (665.2 sq. ft)  
Balcony total (approx.): 5.3 sq. m (57 sq. ft)