



## Leman Street, E1

### £450,000

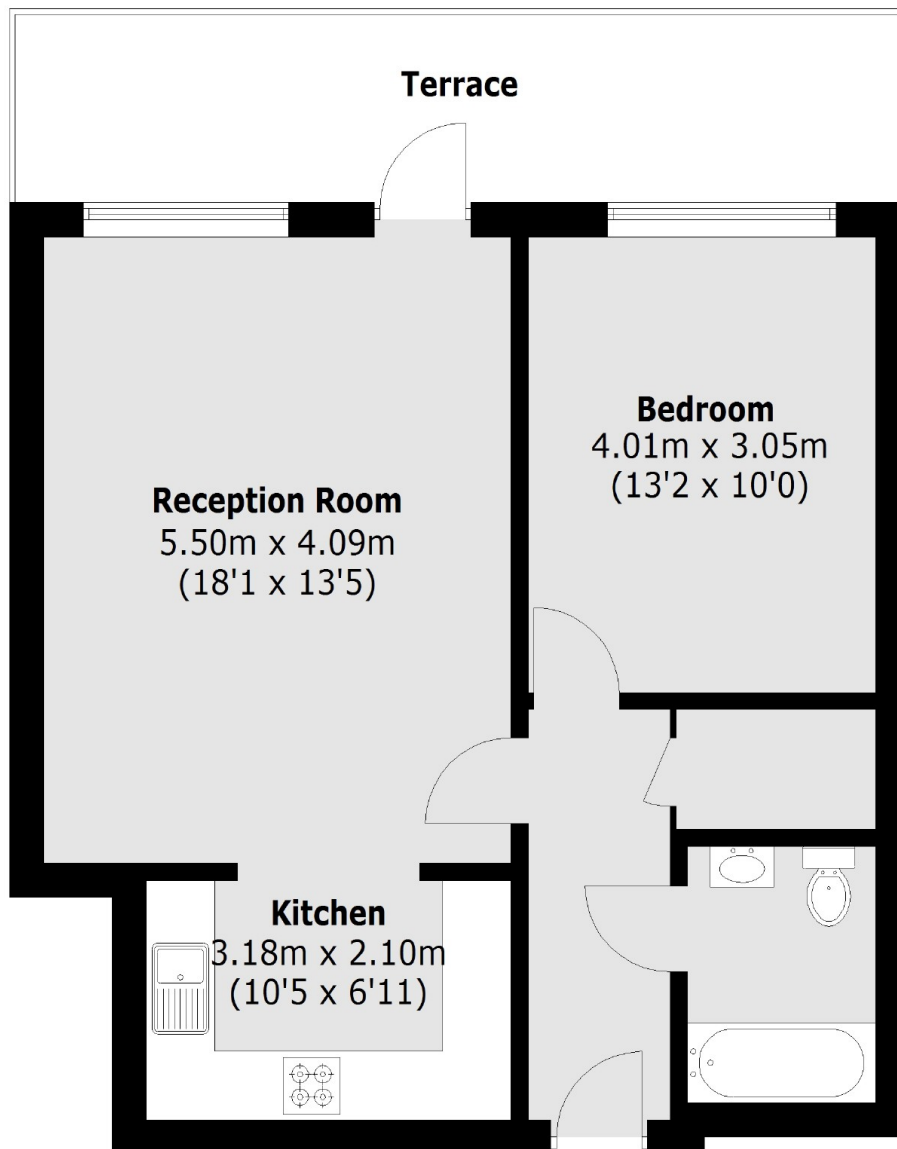
A one bedroom flat located on the ground floor with a private terrace. This property consists of an open plan kitchen/reception room and direct access to a private terrace. There is a modern fitted kitchen with integrated appliances and a storage cupboard in the hallway. Further benefits include floor-to-ceiling windows throughout and the bedroom provides ample storage.

Part of the Berkeley's Goldman's Fields development this property offers food, drink, health and entertainment venues close to the City. The surrounding area offers multiple supermarkets, shops, restaurants, gyms and has excellent transport links. A short walk to Aldgate East tube station (District and Hammersmith and City lines).

### Features

- One Bedroom
- Private Terrace
- Great Transport Links
- Concierge
- Communal Garden
- Modern Design

# Leman Street, London, E1



## Ground Floor

Total area (approx.): 54.5 sq. m (586.6 sq. ft)

Terrace: 12.9 sq. m (138.8 sq. ft)

# Dexters

Shoreditch  
44 Great Eastern Street  
London  
EC2A 3EP

Sales  
0207 483 6371

Energy Rating: . We aim to make our particulars both accurate and reliable. However they are not guaranteed; nor do they form part of an offer or contract. If you require clarification on any points then please contact us, especially if you're traveling some distance to view. Please note that appliances and heating systems have not been tested and therefore no warranties can be given as to their good working order.

 **RICS** | Regulated  
Estate Agent  
and Letting Agent

[dexters.co.uk](https://www.dexters.co.uk)