



Roman Road, E2

£275,000

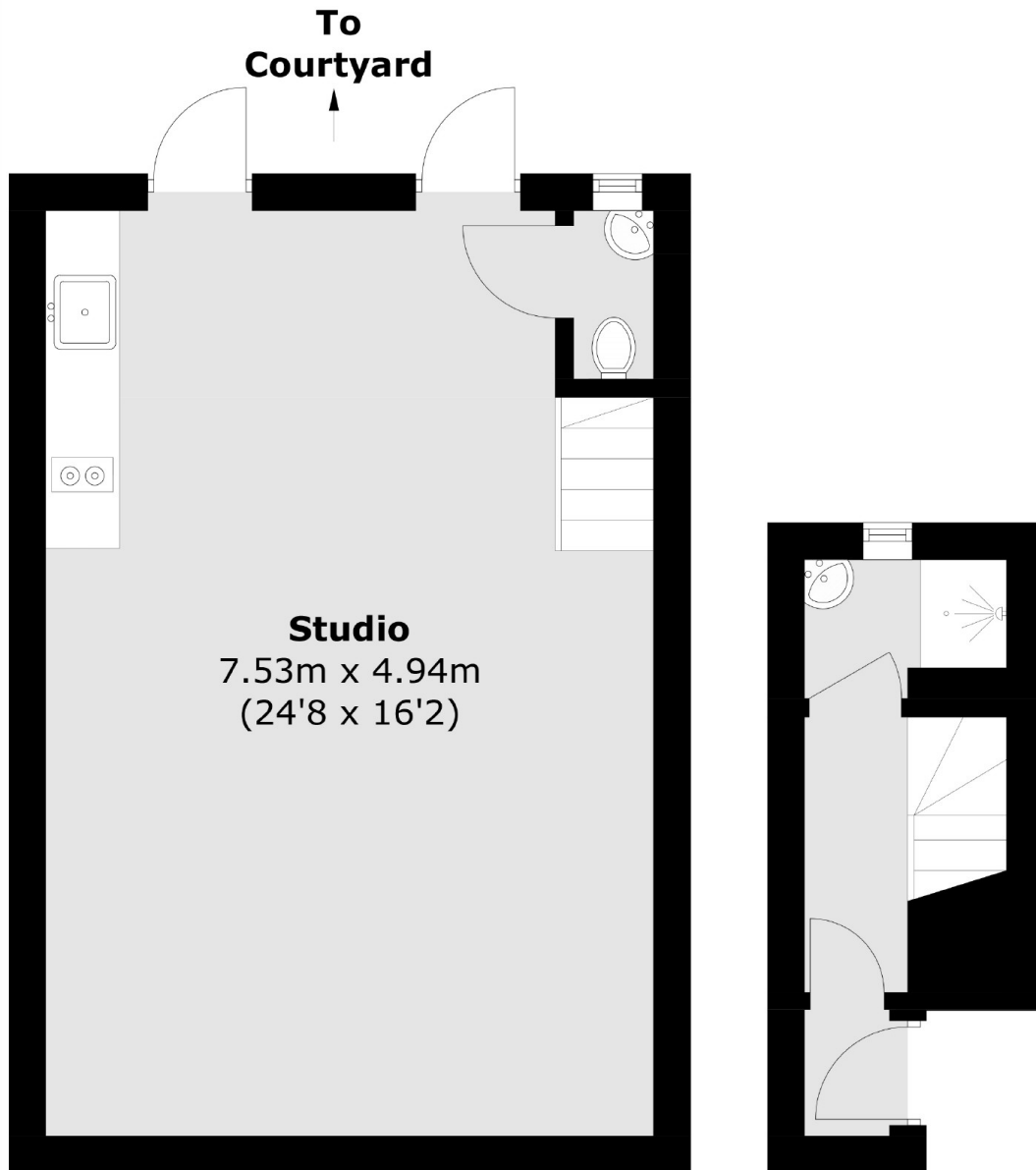
A ground floor apartment with access to its own private courtyard garden. A modern studio apartment located a short distance to Bethnal Green tube station. This property has been recently refurbished throughout and includes a fully fitted kitchen, open plan living space, separate bathroom and WC as well as a private patio garden.

The apartment is located a short distance to Bethnal Green tube station. Also located closely to all local bars, cafés and restaurants of Shoreditch, Bethnal Green and Old Street. Victoria Park is also nearby as well as walks via the Regents Canal.

Features

- Private Courtyard Garden
- Open Plan
- Split Level
- Period Conversion
- Close to Transport
- Great Local Amenities

Roman Road, London, E2



Lower Ground Floor

Ground Floor

Total area (approx.): 44.2 sq. m (475.7 sq. ft)