



## Boundary Street, E2

### £675,000

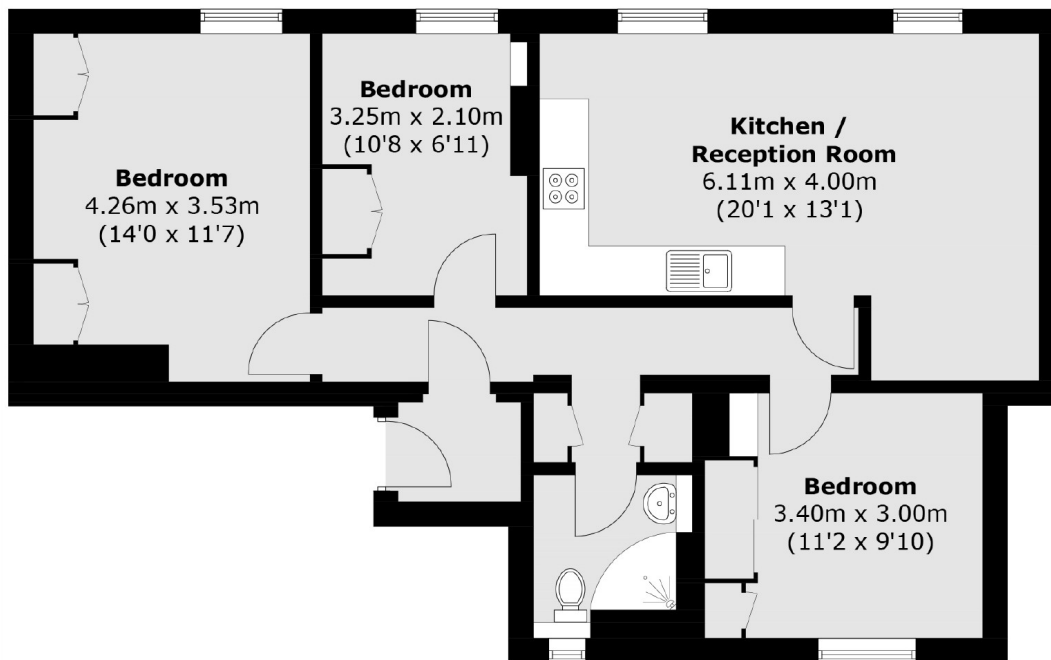
Situated within the famous Boundary Estate, this modern three bedroom apartment occupies the ground floor of an iconic Grade II listed building. The layout features three generously sized bedrooms, a renovated open plan kitchen with integrated appliances, spacious living room and a modern family bathroom. The property offers a generous amount of space, including an external private store cupboard, providing convenient storage for bicycles, prams and other items. This is a rare opportunity to own a characterful property in one of East London's most historic and desirable locations.

Set in the heart of Shoreditch, Abingdon House is moments from the eclectic mix of boutiques, cafes and galleries this area has to offer. Redchurch Street, Boxpark, and restaurants such as Dishoom and the Michelin star Brat are all nearby. The convenient transport links of Liverpool Street, Old Street and Shoreditch High Street all just a short walk away, ensuring connections via Underground, Overground and

### Features

- Grade II Listed Building
- Boundary Estate
- Three Double Bedrooms
- Ground Floor
- Secure Entry
- Renovated

# Boundary Street, London, E2



**Ground Floor**

(Not Shown In Actual  
Location / Orientation)

Total area (approx.): 72.2 sq. m (777.1 sq. ft)  
Storage Room: 1.6 sq. m (17.2 sq. ft)