



## Hemming Street, E1

### £500,000

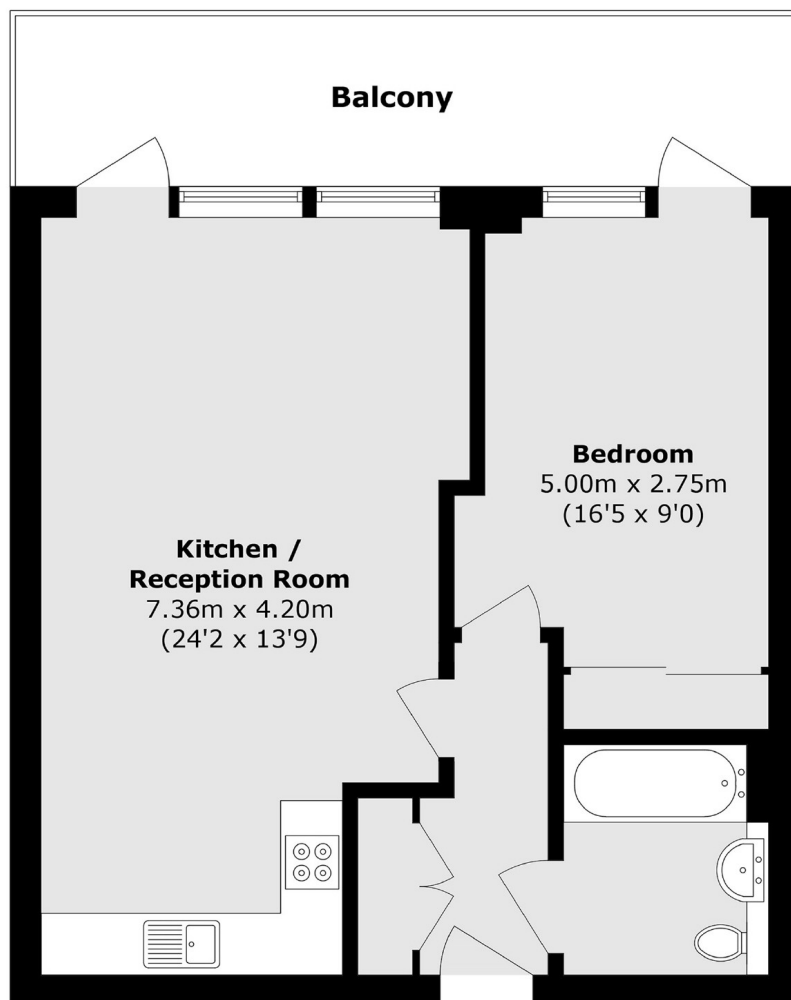
Positioned between Bethnal Green and Brick Lane, this stylish one-bedroom flat offers contemporary living in one of London's most vibrant neighbourhoods. The apartment features a spacious living area and open-plan kitchen with high-quality integrated appliances, opening onto a private balcony, ideal for relaxing or entertaining. The double bedroom offers generous built-in storage and its own balcony access, while large windows fill the space with natural light throughout the day. Spacious bathroom completes the property, designed with modern fittings and sleek finish.

Convenient transport links via Bethnal Green (Windrush & Central Lines) and Whitechapel (Elizabeth, District, Hammersmith&City Lines) place the rest of London at your doorstep.

### Features

- One Double Bedroom
- Underfloor Heating
- Private Balcony
- Open Plan and Modern Design
- Natural Light
- Communal Roof Terrace

# Hemming Street, London, E1



Total area (approx.): 52.0 sq. m (559.7 sq. ft)  
Balcony area (approx.): 11.4 sq. m (122.7 sq. ft)