



Tomlinson Close, E2

£2,750 Per week

A three bedroom split level property in Bethnal Green. This maisonette has a large reception room, separate kitchen, three double bedrooms and a private balcony. The property is available furnished.

Tomlinson Close is located a short distance to Bethnal Green tube station and has a great choice of bars, cafes and restaurants in the local area.

Features

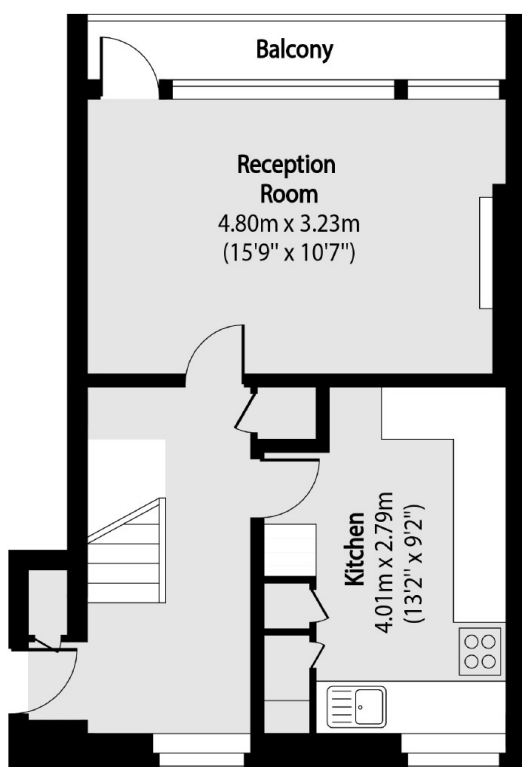
Three Bedrooms
Split Level
Maisonette
Great Location
Furnished
Balcony



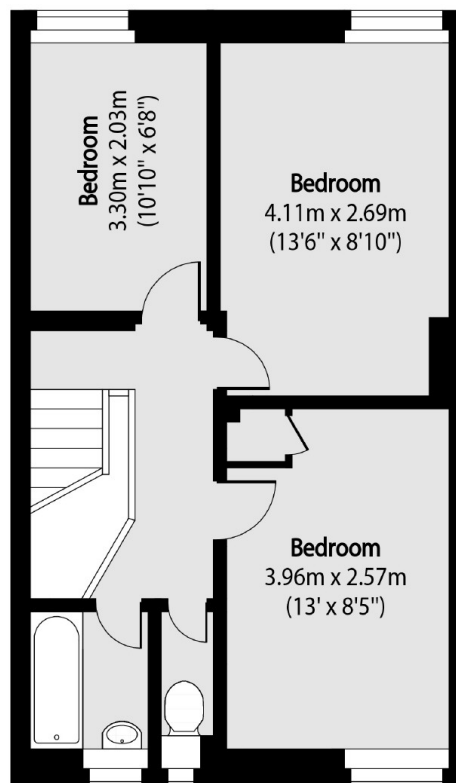
Tomlinson Close, E2



Tomlinson Close, London, E2



Second Floor



Third Floor

Total area (approx): 77.38 sq m (833 sq. ft)

Balcony total area (approx): 3.34 sq m (36 sq. ft)