



Candle Street, E1

£350,000

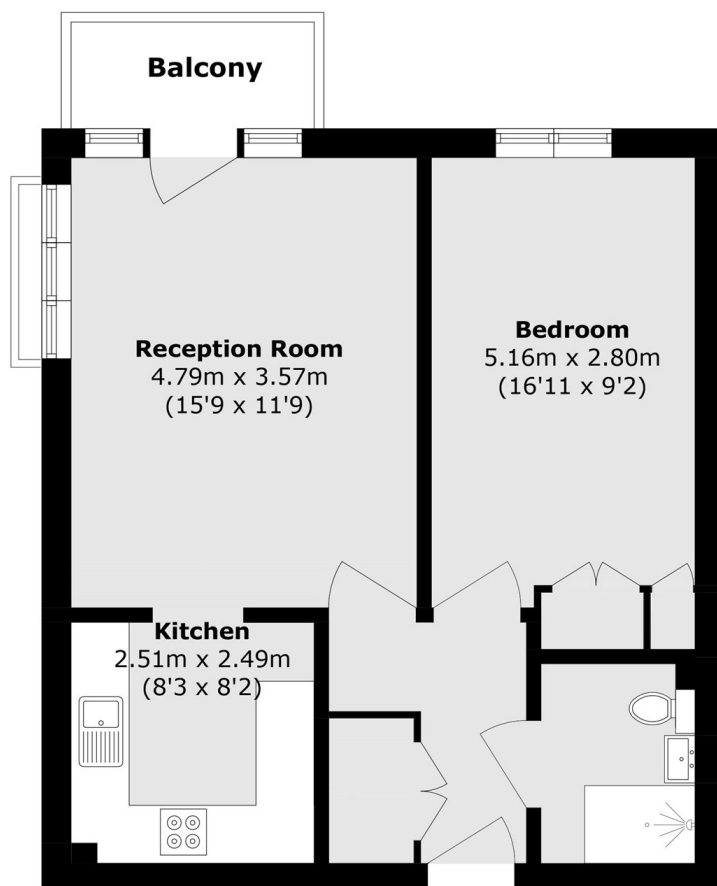
A well-presented one bedroom apartment located on the top floor with dual aspect views of the canal and the City. The apartment benefits from a large double bedroom, an entrance hall with plenty of storage, a separate modern shower room and wooden floors throughout.

Ideally located equidistant from both Stepney Green (District, Hammersmith&City), Mile End (Central) and Limehouse for DLR, this location offers convenient access to transport links throughout the City. The local area provides a selection of cafés, bars and restaurants and the green spaces of Mile End Park and Victoria Park are nearby.

Features

- One Double Bedroom
- Top Floor Flat
- Private Balcony
- Dual Aspect
- Purpose Built
- Wooden Floors

Candle Street, London, E1



Total area (approx.): 46.9 sq. m (504.8 sq. ft)

Balcony area (approx.): 2.7 sq. m (29.0 sq. ft)