



## East Road, N1

### £675,000

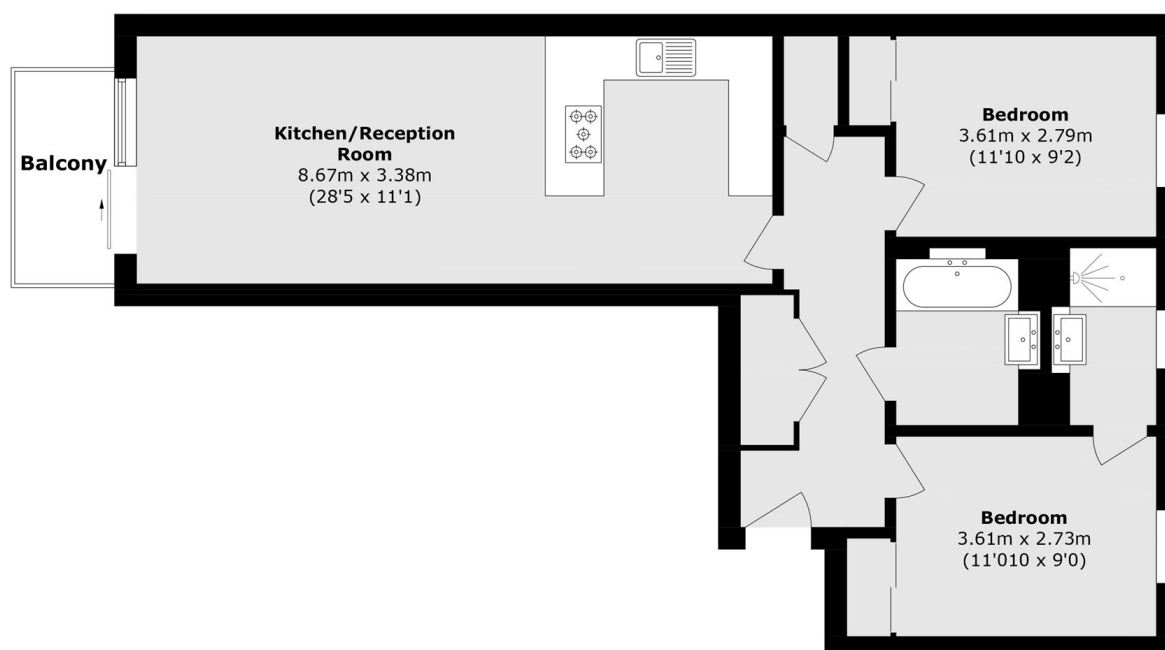
A well-presented apartment in a modern development. The property offers two large double bedrooms, one with an en-suite and a separate family bathroom. There are additional storage cupboards in the hallway and a generous open-plan kitchen/reception leads to the private, west-facing, balcony. The property has recently been redecorated and is offered chain-free.

Located equidistant from both Hoxton (Windrush line) and Old Street (Northern line), this share of freehold flat is conveniently positioned for access to all corners of the City. The surrounding area offers a vast selection of bars, restaurants and cafés as well as the green space of Shoreditch Park.

### Features

- Modern Development
- Two Double Bedroom
- Recently Re-decorated
- West Facing
- Open Plan
- Central Location

# East Road, London, N1



Total area (approx.): 72.0 sq. m (775 sq. ft)