



Phipp Street, EC2A

£2,000 Per calendar month

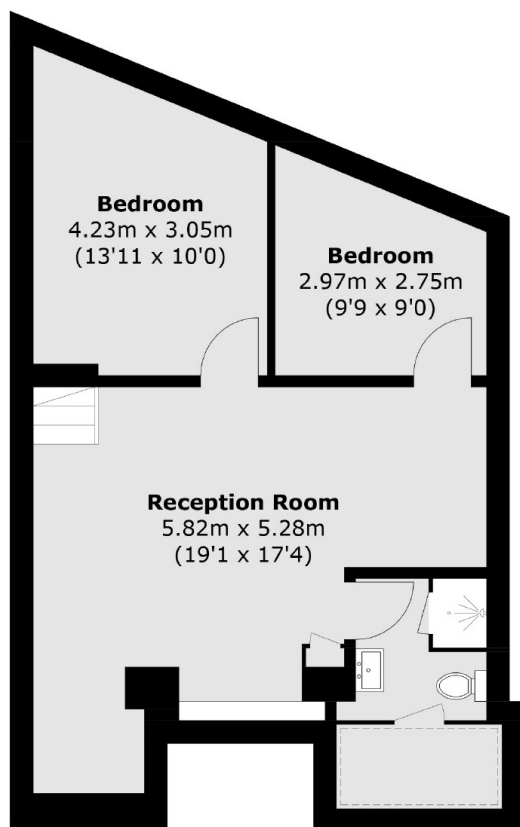
A large split level apartment with two sleeping areas in the heart of Shoreditch. This apartment which is set over two levels includes a large eat in kitchen, reception area, main bathroom and two sleeping areas. The apartment is available unfurnished.

The apartment is located in the heart of Shoreditch with a great choice of restaurants, cafes and bars available. The apartment is a short distance to Liverpool Street and Shoreditch High Street stations.

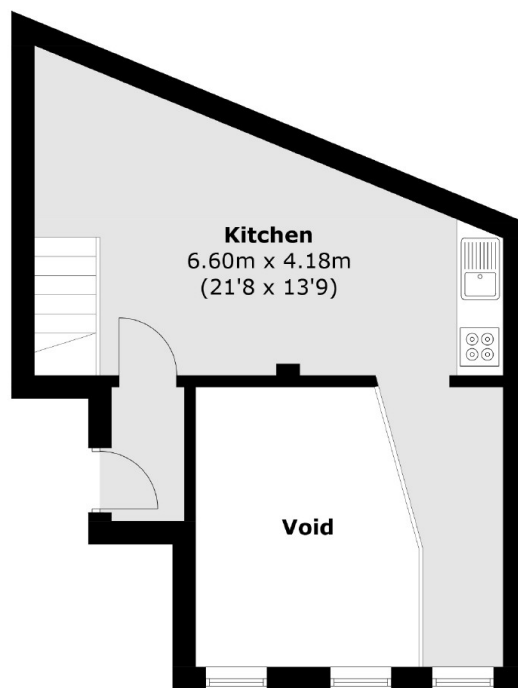
Features

Good Size
Wooden Flooring
Heart of Shoreditch
Two Sleeping areas
Unfurnished
Split Level

Phipp Street,
London, EC2A



Lower Ground Floor



Ground Floor

Total area (approx.): 73.8 sq. m (794.3 sq. ft)
(Excluding Void)