



Central Street, EC1V

£400,000

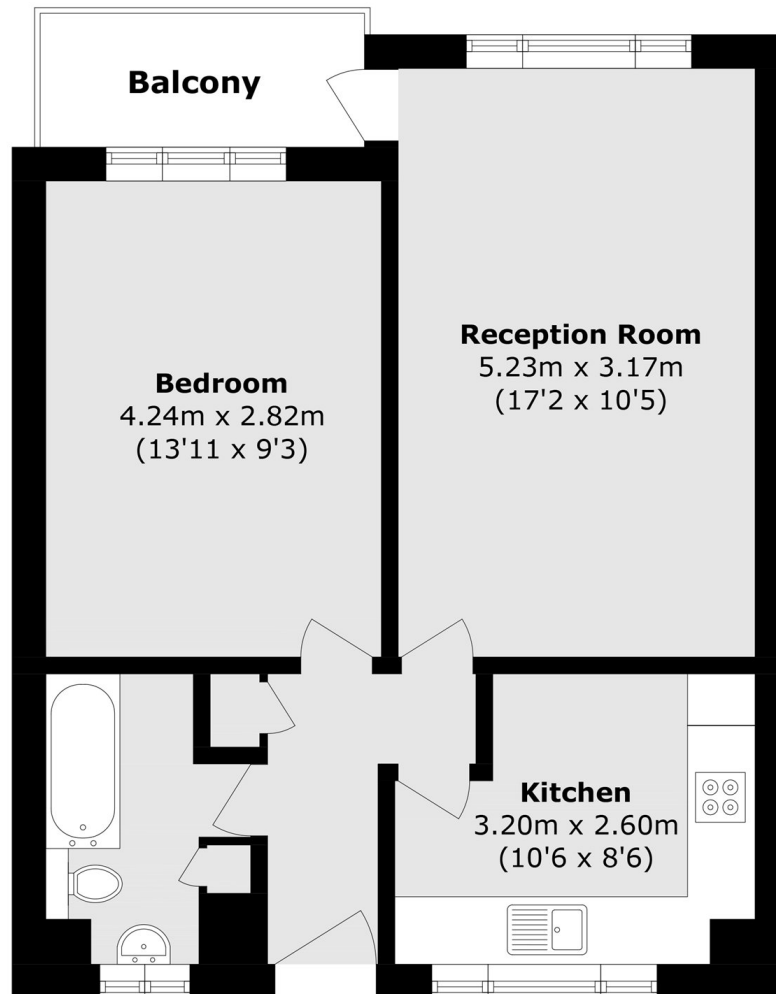
A one-bedroom flat located on the second floor. This property offers a separate kitchen and reception room, which leads onto the private balcony with fantastic views. The apartment benefits from a large double bedroom and plenty of natural light, and there is additional storage space in the hallway.

Located equidistant between Angel and Old Street (Northern line) stations, this property is ideally located for commuters with plenty of local amenities such as shops, cafés and bars nearby.

Features

- One Double Bedroom
- Private Balcony
- Great Location
- Natural Light
- Wooden Flooring
- Separate Kitchen

Central Street,
London, EC1V



Total area (approx.): 47.0 sq. m (505.9 sq. ft)
Balcony area (approx.): 3.4 sq. m (36.5 sq. ft)