



Cadmium Square, E2

£550,000

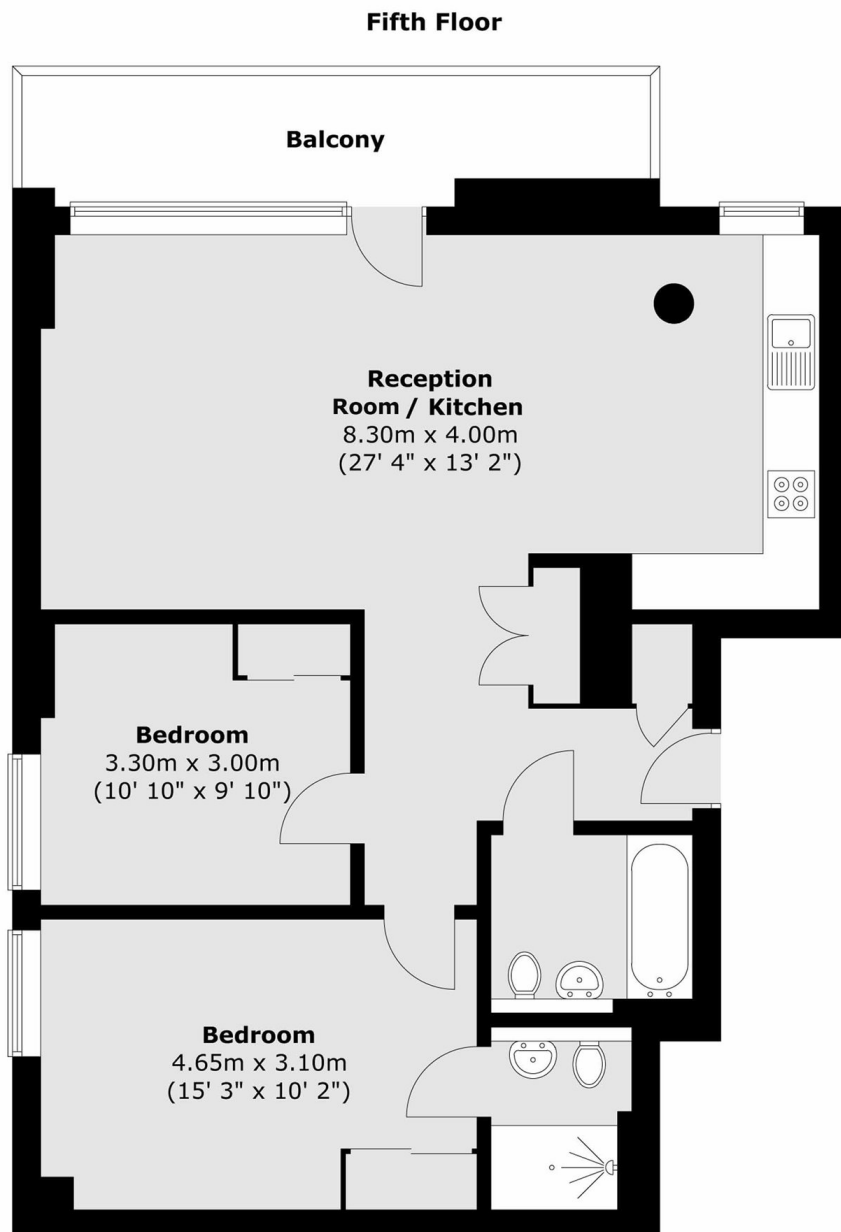
Two bedroom, two bathroom apartment set on the 5th floor of Grand Regent Tower, the pinnacle building on this modern, sought after, Palmers Road development. This apartment has a spacious, open plan living area with space to dine and a fully integrated kitchen. The open plan area leads out onto the apartments private balcony which spans the width of the apartment. The property has two double bedrooms with ample inbuilt storage and the principal bedroom is en-suite. The hallway has plenty of further storage and the stylish family bathroom.

Grand Regent Tower is ideally located on the sought after Palmers Road, just a short distance from Mile End (District, Hammersmith&City) and Bethnal Green (Central). Victoria Park is close by along with local coffee shops and restaurants.

Features

- Two Bedrooms
- Two Bathrooms
- Private Balcony
- Modern interiors
- On-site concierge

Cadmium Square, London, E2



Total area (approx.) : 76.6 sq. m (824 sq. ft)
Total balcony area (approx.) : 9.4 sq. m (101 sq. ft)