



Steward Street, E1

£500,000

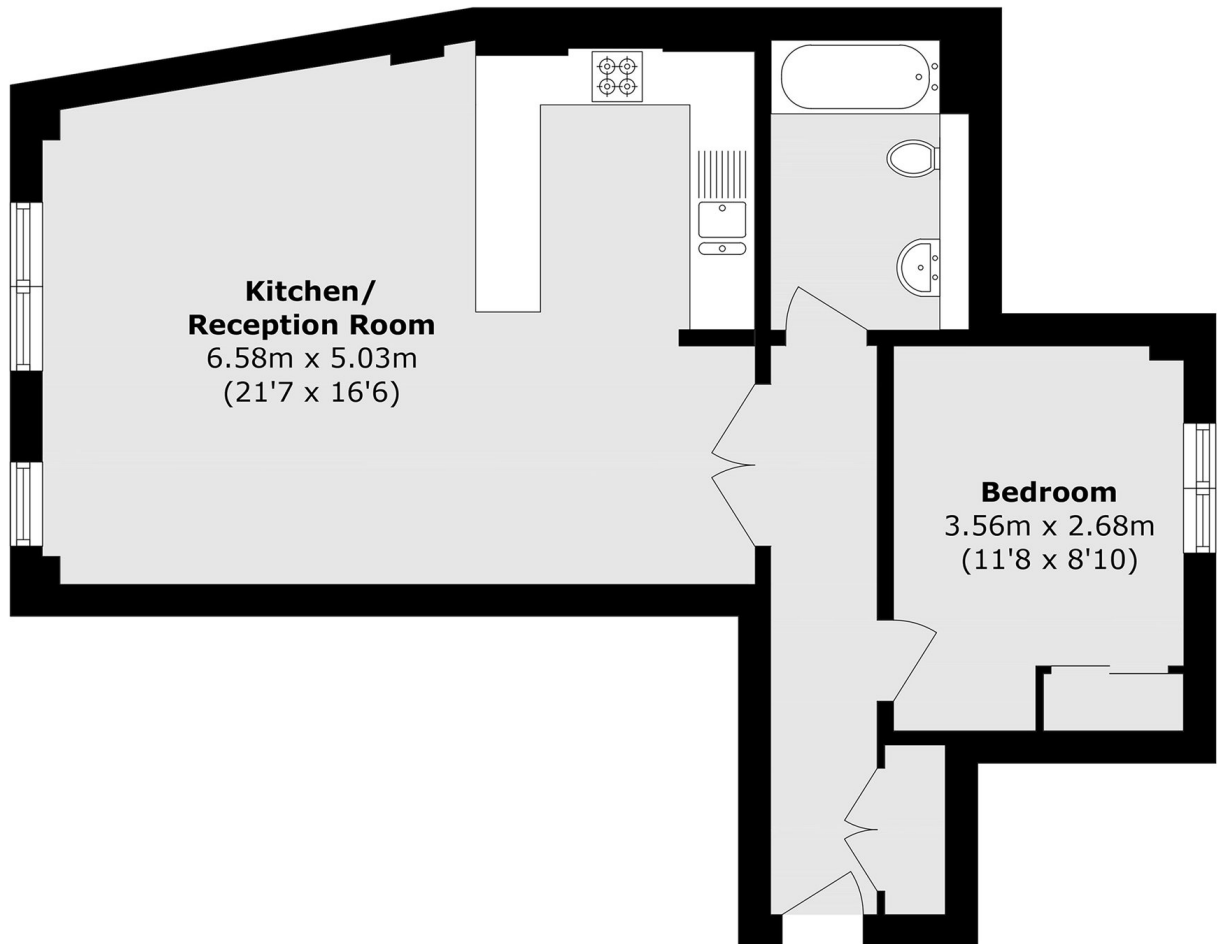
A large one-bedroom apartment located on the top floor in a desirable block located on the edge of Spitalfields Market. The apartment comprises an open-plan kitchen/living room, a contemporary bathroom and a double bedroom.

Steward Street is situated on the doorstep of Spitalfields Market and offers a unique haven from the City, surrounded by cobbled streets, cafés and restaurants, just moments from Liverpool Street Station.

Features

Top Floor Apartment
Doorstep of Spitalfields
Market
Open Plan Kitchen
Offered Chain Free
Secure Entry
Lift Access

Steward Street,
London, E1



Total area (approx.): 54.0 sq. m (581.3 sq. ft)