



Mansell Street, E1

£550,000

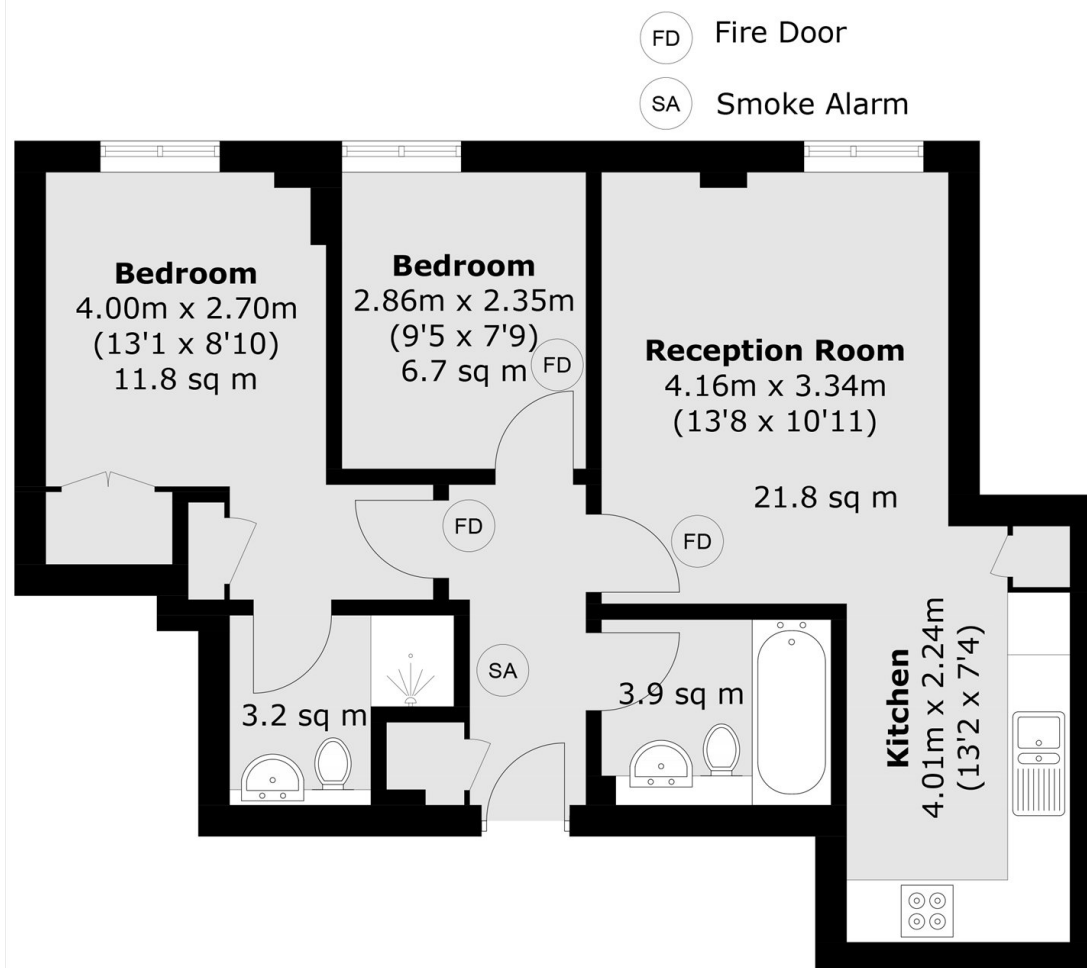
A bright and spacious two double bedroom, two bathroom flat that is based in the popular Tower Hill area. The property has an open plan kitchen/living room with a fully fitted eat-in kitchen, two double bedrooms, one with an en-suite. Residents benefit from lift access and a day porter.

This central location provides great transport links throughout London and is a short walk from The City. The property is in close proximity to Aldgate East (Hammersmith & City, District), Aldgate (Circle, Metropolitan), Liverpool Street (Underground, Overground and Mainline) and Shadwell (Windrush, DLR). The local area offers fantastic amenities including several bars, cafes, restaurants, gyms and a luxury cinema."

Features

- Two Bedroom
- Two Bathroom
- Concierge
- Lift Access
- Secure Entry
- Good Transport Links

Mansell Street, London, E1



Total area (approx.): 55.1 sq. m (593.1 sq. ft)