



## Curtain Road, EC2A

### £650,000

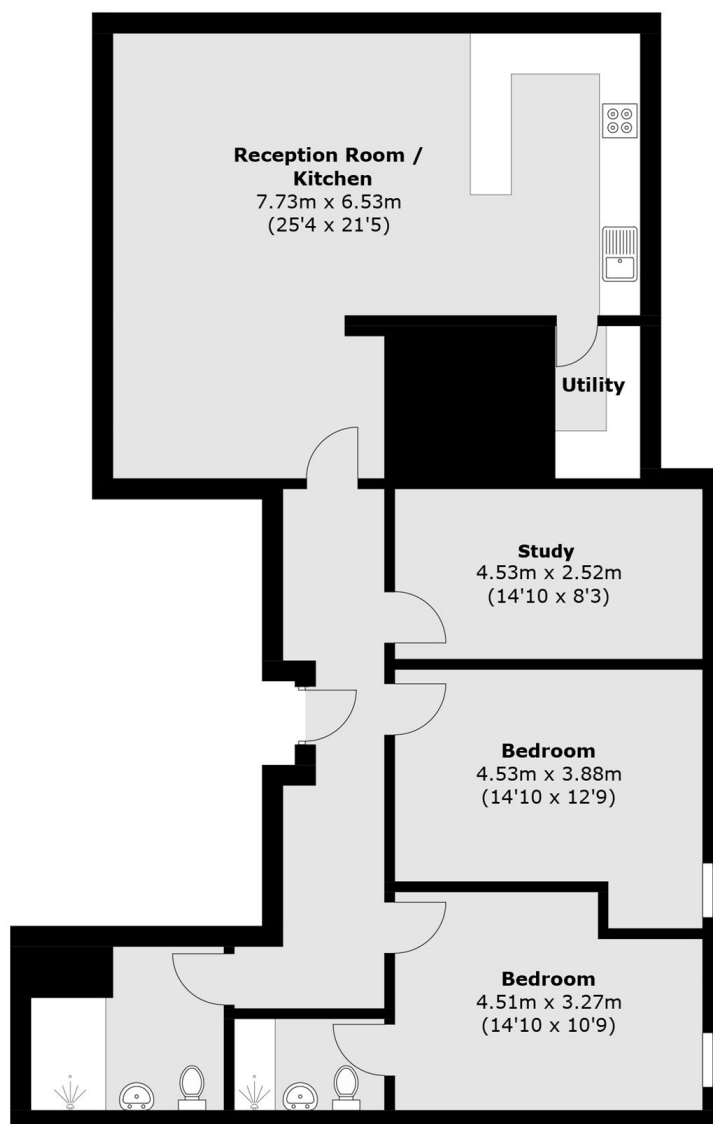
Large two/three bedroom property located in a sought after Shoreditch location. The apartment has a spacious living room with ample space to dine and a semi-open plan kitchen with fully integrated appliances and breakfast bar. The apartment has two large double bedrooms, the principle bedroom is en-suite and a third spacious room, currently used as a studio/study, the property also has a modernised family bathroom. This popular development is secure and gated.

Situated on Curtain Road, this property benefits from a vibrant Shoreditch location. Residents will be within a short distance of the area's renowned creative hub, with its eclectic mix of galleries, boutiques, and restaurants. Excellent transport links provide easy access to the rest of London.

### Features

- Two/three bedrooms
- Two bathrooms
- Sought after Shoreditch location
- Large property
- Modern interiors

# Curtain Road, London, EC2A



Total area (approx.): 115.4 sq. m (1,242.2 sq. ft)