



## Weymouth Terrace, E2

### £499,999

This well-presented three bedroom maisonette is located on the third and fourth floors of this purpose-built block with lift access. Renovated to a high level, the property features downstairs WC, a modern kitchen with integrated appliances, a spacious living area with a feature wall, efficient wall radiators, and a south-facing aspect.

Upstairs are three good-sized bedrooms and a modern family bathroom. Fellows Court is just off Hackney Road, with shops, cafes, and the Columbia Road Flower Market nearby. Haggerston Park is within walking distance, and Hoxton Overground Station is only 0.1 miles away.

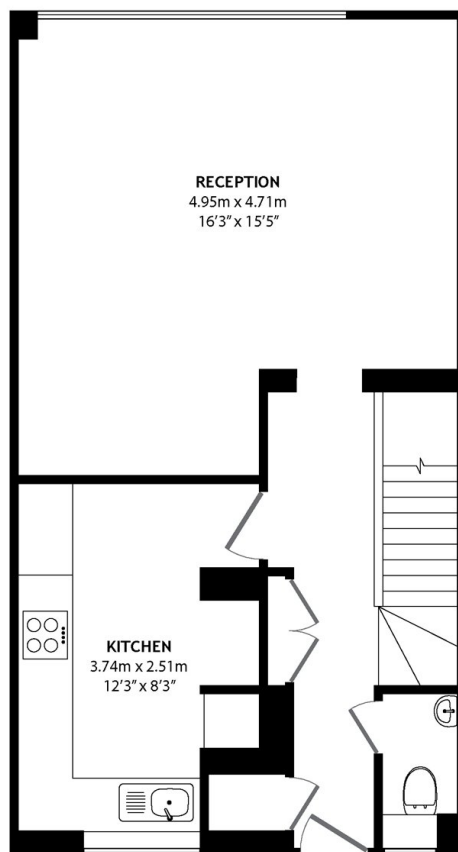
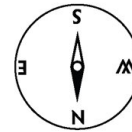
### Features

- Lift Access
- Three Bedrooms
- Near Columbia Road
- Maisonette
- South Facing Aspect

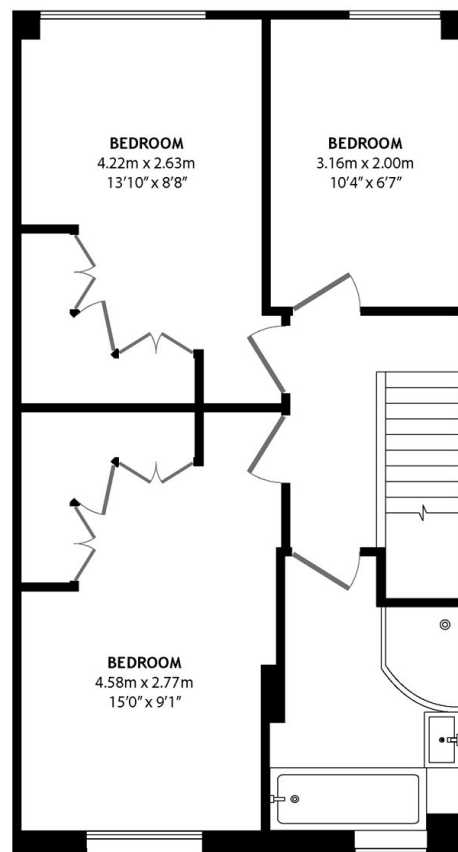
# Weymouth Terrace, London, E2

## WEYMOUTH TERRACE E2

Approximate Gross Internal Area  
84.17 m<sup>2</sup> / 906.00 sq<sup>ft</sup>



THIRD FLOOR



FOURTH FLOOR