



Drysdale Street, N1

£850,000

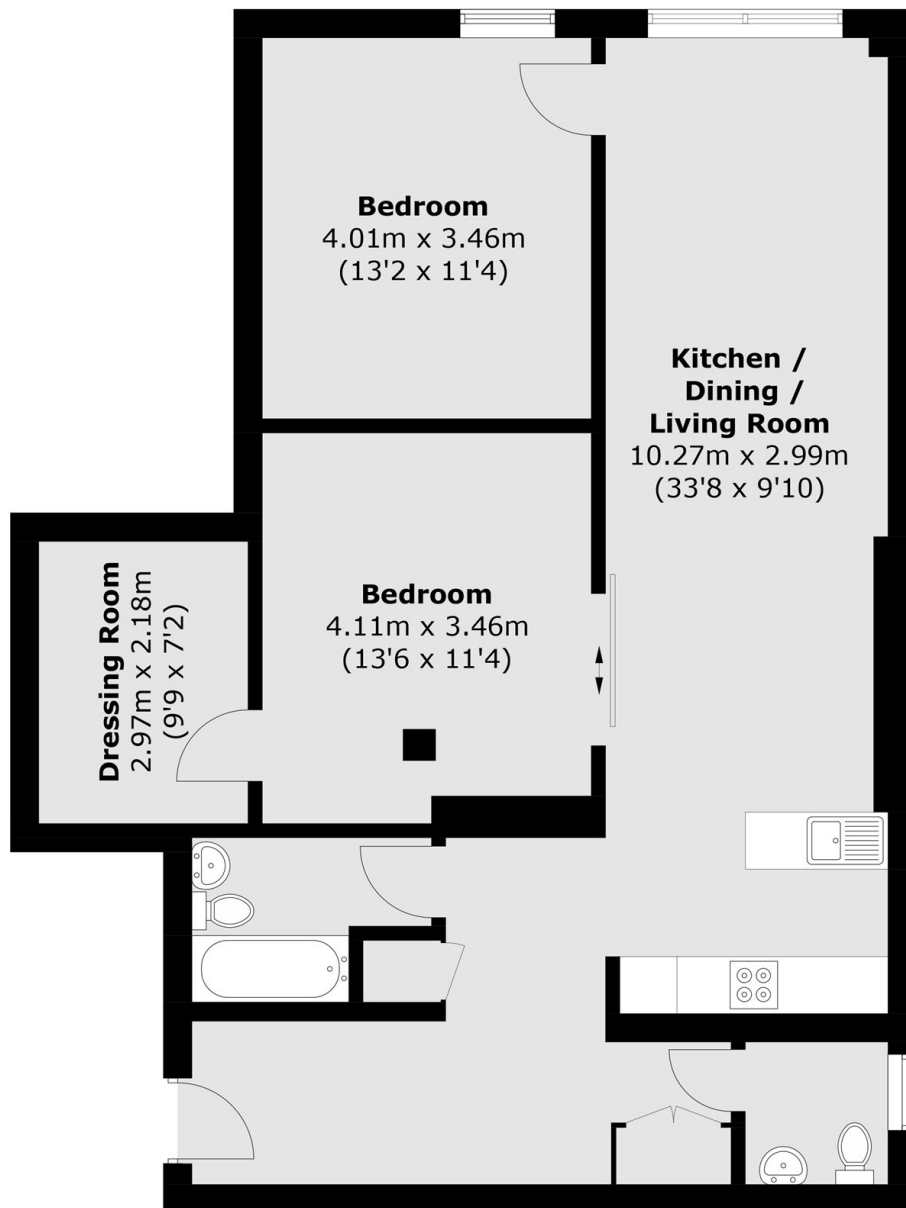
A modern two-bedroom two-bathroom apartment located on the second floor in Timber Yard. The apartment comprises two double bedrooms, one with a walk-in wardrobe, an open plan kitchen/living room, two family bathrooms and inbuilt storage.

Located a very short distance from Hoxton Square, this apartment is in the heart of Shoreditch/Old Street with a host of bars, cafes and restaurants.

Features

Modern
Two Double Bedrooms
Two Bathroom
Furnished
Secure Entry
Great Location

Drysdale Street,
London, N1



Total area (approx.): 89.3 sq. m (961.2 sq. ft)