



Hanson Street, W1W

£530 Per week

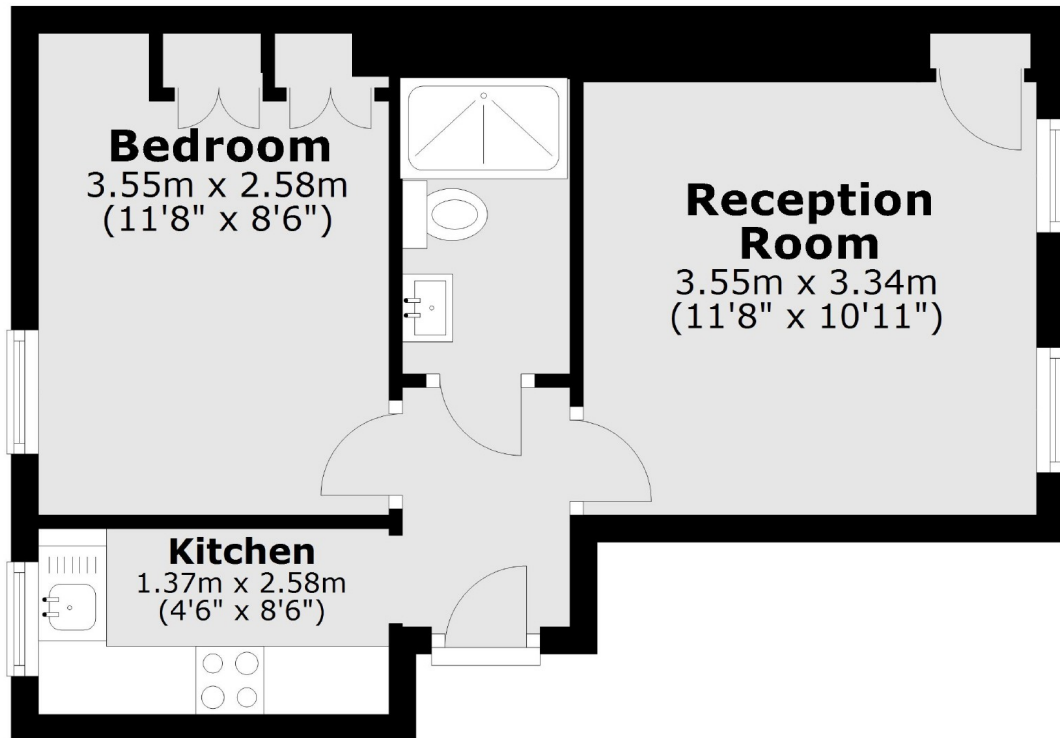
A bright and recently refurbished one double bedroom apartment on the fourth floor of this well maintained red brick mansion building, conveniently located in the heart of Fitzrovia.

The nearest transport links include Oxford Circus, Tottenham Court Road and Warren Street underground stations.

Features

- Top Floor Apartment
- One Double Bedroom
- Centrally Located
- Recently Refurbished
- Good Natural Light
- Central Location

**Hanson Street,
London, W1W**



Fourth Floor

Total area: approx. 31.0 sq. metres (333.2 sq. feet)