

Albany Street, NW1

£525 Per week

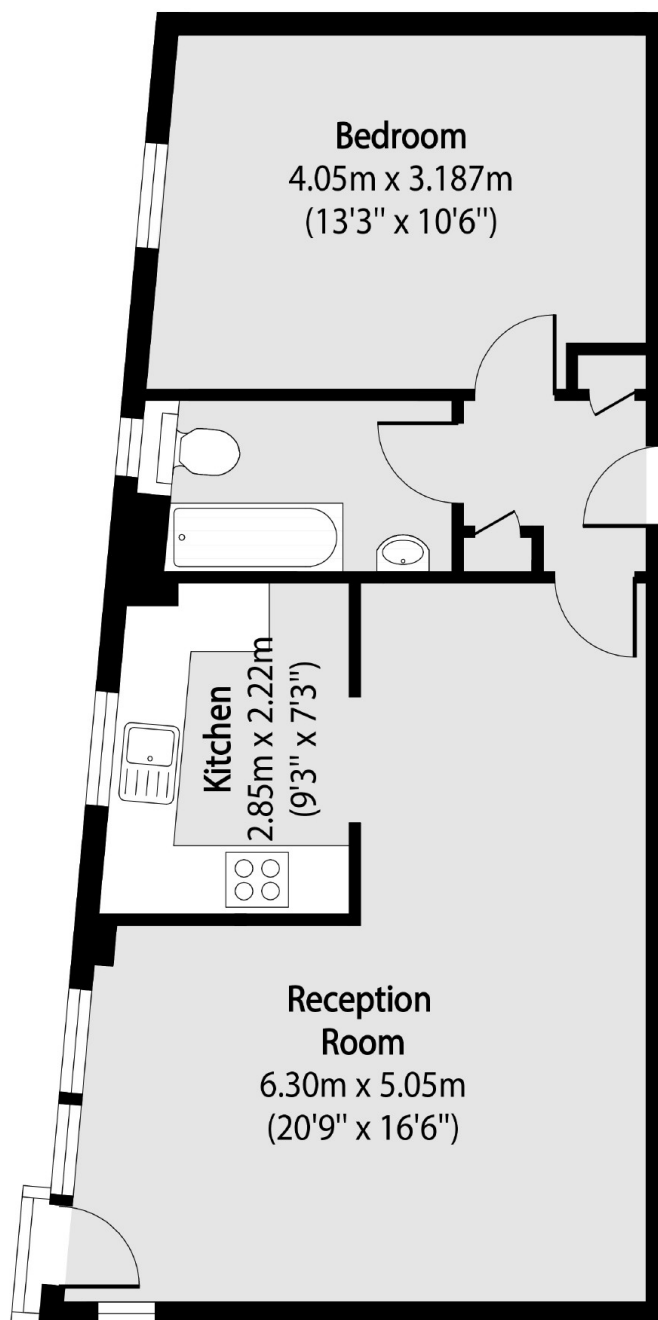
A bright one bedroom apartment located close to Great Portland Street Station. The property is presented in good condition throughout and benefits from a large living room and separate kitchen.

Albany Street is a popular street which follows Marylebone Road up to Gloucester Gate and is just moments from Great Portland Street Underground.

Features

- One Bedroom
- Lift Access
- Great Natural Light
- Good Storage
- Separate Kitchen
- Day Time Porter

Albany Street, London, NW1



Total area (approx): 51.06 sq m (549 sq. ft)