



## Earlham Street, WC2H

**£610** Per week

This stylish one double bedroom apartment is located on the first floor of a purpose built block on Seven Dials in the heart of Covent Garden. This exceptionally bright property has a fitted, well-equipped kitchen along with a spacious reception area with wooden flooring throughout.

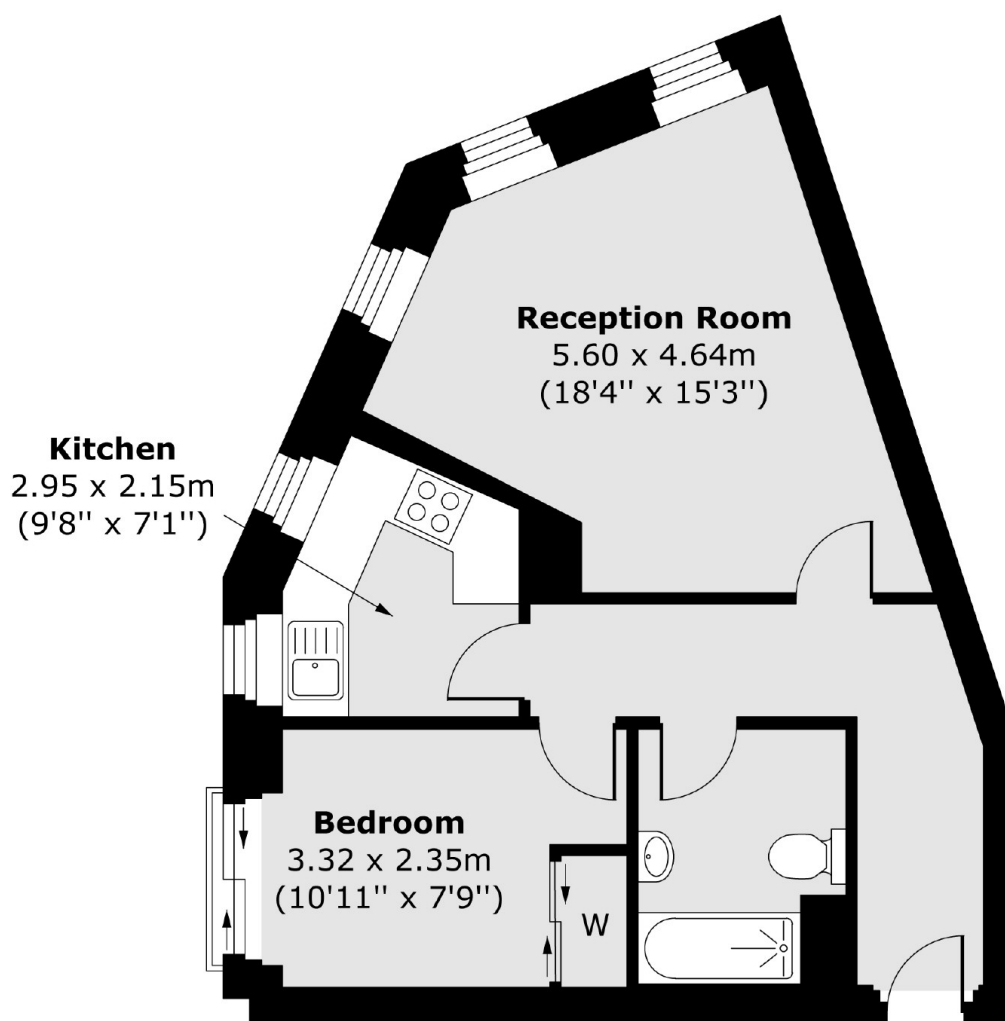
Earlham Street is ideally located to all the shops, bars and restaurants on Seven Dials and Covent Garden Piazza with Covent Garden and Leicester Square Stations within a quarter of a mile.

### Features

- Wooden Floors
- Lift Access
- Furnished
- Modern
- Built In Wardrobe
- Centrally Located

Earlham Street,  
London, WC2H

First Floor



Total area (approx.) 40.66 sq. m (438 sq. ft)

**Dexters**

Fitzrovia & Covent Garden  
66 Goodge Street  
London  
W1T 4NG  
Lettings  
020 7067 2402

Energy Rating: B. We aim to make our particulars both accurate and reliable. However they are not guaranteed; nor do they form part of an offer or contract. If you require clarification on any points then please contact us, especially if you're traveling some distance to view. Please note that appliances and heating systems have not been tested and therefore no warranties can be given as to their good working order.

 **RICS** | Regulated  
Estate Agent  
and Letting Agent

dexters.co.uk