



Torrington Place, WC1E

£1,650 Per week

Dexters



Torrington Place, WC1E

A well-presented four-bedroom apartment, benefiting from abundant natural light with wooden flooring throughout. The flat comprises an open-plan reception and dining area and a separate contemporary kitchen. The property has exceptionally high ceilings, four bedrooms, three bathrooms, and a guest WC. The property is well suited to family occupation.

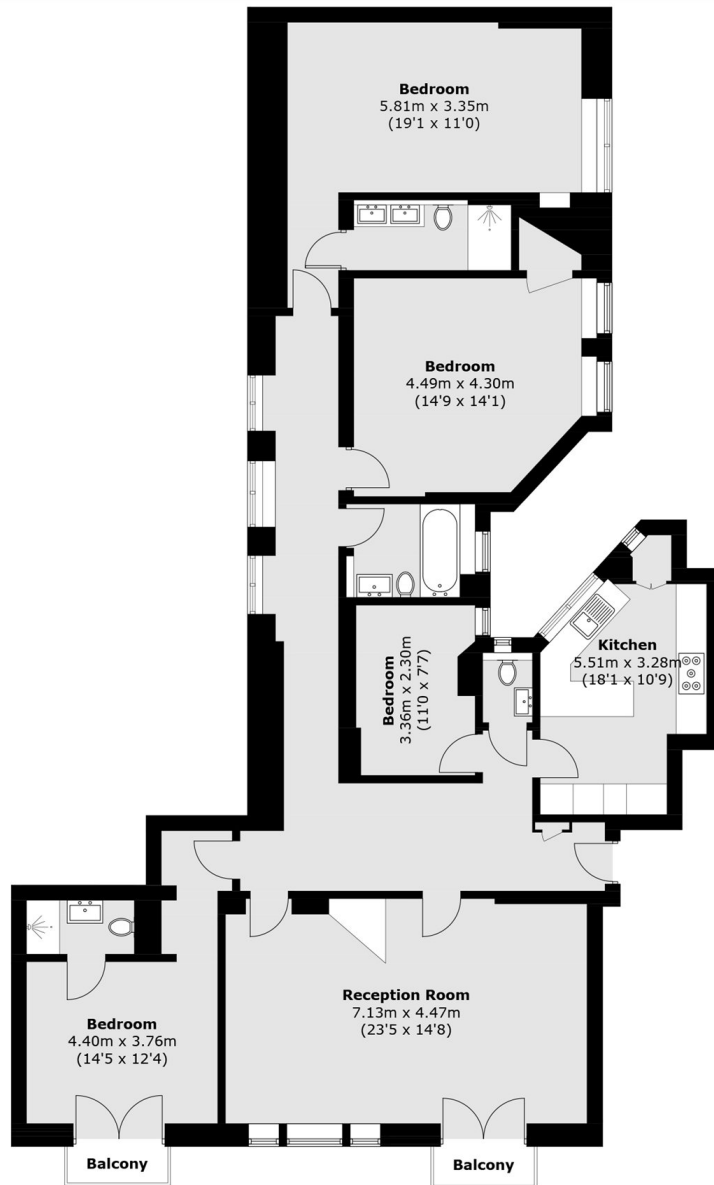
Torrington Place is situated just off Tottenham Court Road and benefits from excellent transport connections via Goodge Street (Northern line) and Tottenham Court Road (Elizabeth, Central, and Northern lines) train stations. The surrounding areas of Fitzrovia, Bloomsbury, and the West End are all within close proximity, offering a wide range of dining, shopping, and cultural amenities.

Features

- Four Bedrooms
- Wooden Floors
- High Ceilings
- Separate Kitchen
- Mansion Block
- Ample Storage Space



Torrington Place, London, WC1E



Fifth Floor

Total area (approx.): 159.8 sq. m (1,720.1 sq. ft)
Balcony area: 2.9 sq. m (31.2 sq. ft)