



Burrows Mews, SE1

£500,000

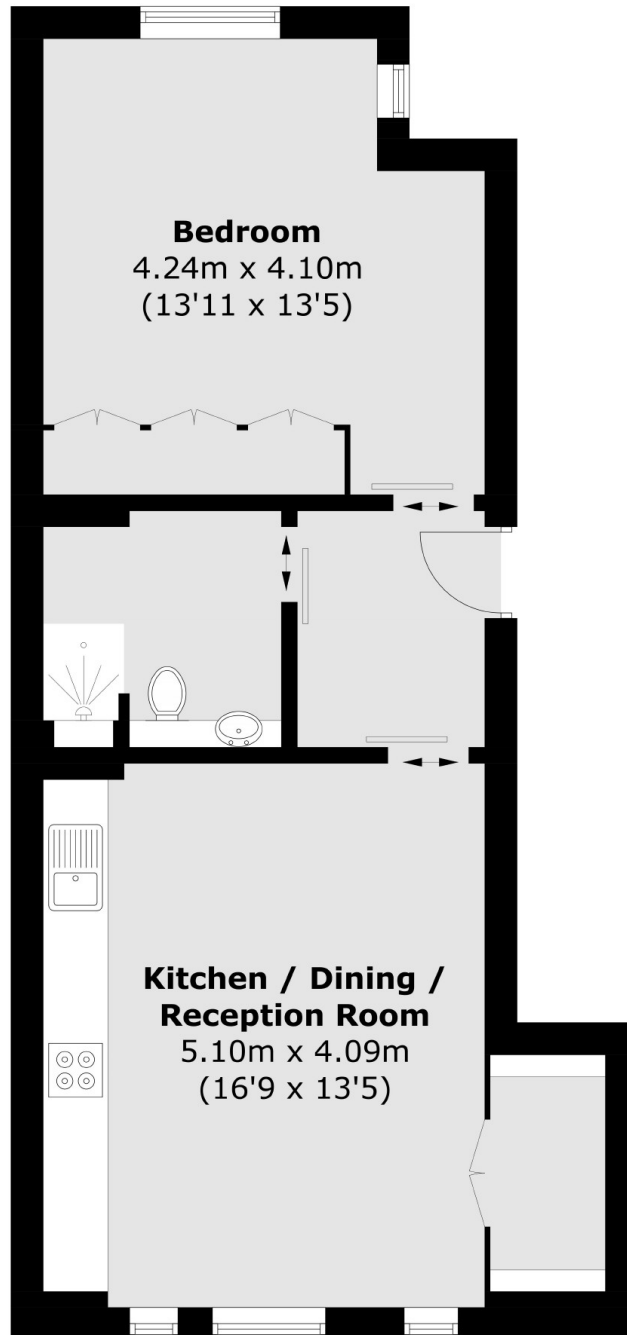
Inspired by the London Bridge industrial history, Loha House is a collection of three brand new apartments, just moments walk to Waterloo. This first floor apartment enjoys an open plan living room. The kitchen is complete with Bosch appliances, under counter lighting. The bedroom enjoys built in wardrobes, whilst the bathroom is complete with walk in shower.

Just a short walk away, London Bridge is a major transport hub offering Northern and Jubilee underground connections and national rail. Several bus routes provide easy access to various parts of the city. The Thames Clipper river bus service is accessible from London Bridge City Pier, offering a scenic and convenient way to travel along the Thames.

Features

- New Build Apartments
- Quiet Location
- Waterloo Station 7 Mins
- Engineered Oak Flooring
- Bosch Appliances
- 10 Year Warranty

Burrows Mews, London, SE1



Total area (approx.): 49.9 sq. m (537.1 sq. ft)

Dexters

New Homes North & East
54 Borough High Street
London
SE1 1XL

020 7590 7299

Energy Rating: . We aim to make our particulars both accurate and reliable. However they are not guaranteed; nor do they form part of an offer or contract. If you require clarification on any points then please contact us, especially if you're traveling some distance to view. Please note that appliances and heating systems have not been tested and therefore no warranties can be given as to their good working order.

 **RICS** | Regulated
Estate Agent
and Letting Agent

[dexters.co.uk](https://www.dexters.co.uk)