



Jubilee Close, NW10

£275,000

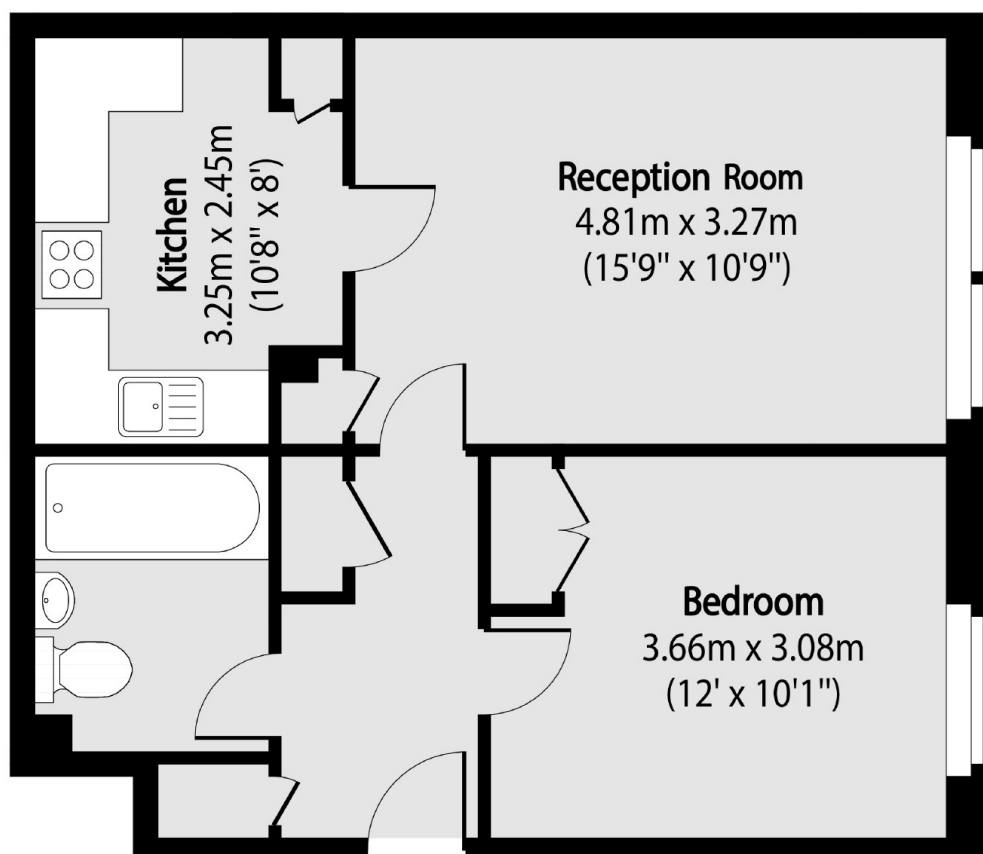
A spacious one bedroom flat in a purpose built block, providing well proportioned rooms with built-in storage, a separate kitchen, a large reception room, and is available chain-free.

Jubilee Close is located close to local amenities, cafes, shops and restaurants in Harlesden. Transport links include Willesden Junction(Bakerloo & Overground) and multiple bus routes.

Features

- One Bedroom
- Ground Floor Flat
- Separate Kitchen
- Built-In Storage
- Chain-Free
- Close To local Amenities

Jubilee Close, London, NW10



Total area (approx): 47.31 sq m (509sq. ft)