



Kingfisher Way, NW10

£300,000

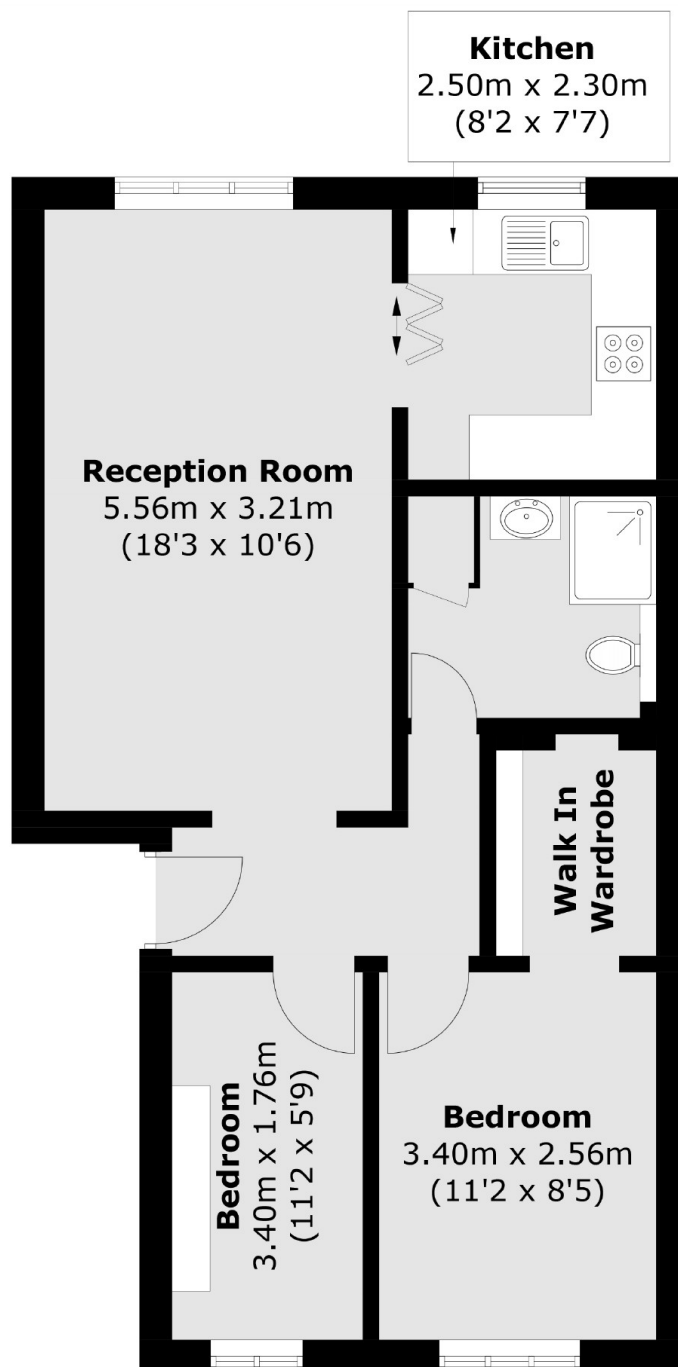
Set within a modern build is this two bedroom ground floor flat. The property has a separate kitchen off the reception room, the larger of the two bedrooms has a walk-in wardrobe, a communal garden, allocated off-street parking, and is available chain-free.

Kingfisher Way is located close to the shops, cafes and amenities in Harlesden and Wembley. Transport links include Stonebridge Park (Bakerloo & Overground), Harlesden (Bakerloo & Overground), and multiple bus routes.

Features

- Two Bedrooms
- Separate Kitchen
- Communal Garden
- Allocated Off-Street Parking
- Chain-Free
- Close To Local Amenities

Kingfisher Way, London, NW10



Total area (approx.): 53.4 sq. m (574.8 sq. ft)

Dexters

Kensal Rise & Queen's Park
62 Chamberlayne Road
London
NW10 3JJ

Sales
020 8600 3100

Energy Rating: D. We aim to make our particulars both accurate and reliable. However they are not guaranteed; nor do they form part of an offer or contract. If you require clarification on any points then please contact us, especially if you're traveling some distance to view. Please note that appliances and heating systems have not been tested and therefore no warranties can be given as to their good working order.

 **RICS** | Regulated
Estate Agent
and Letting Agent

[dexters.co.uk](https://www.dexters.co.uk)