



The Avenue, NW6

£853 Per week

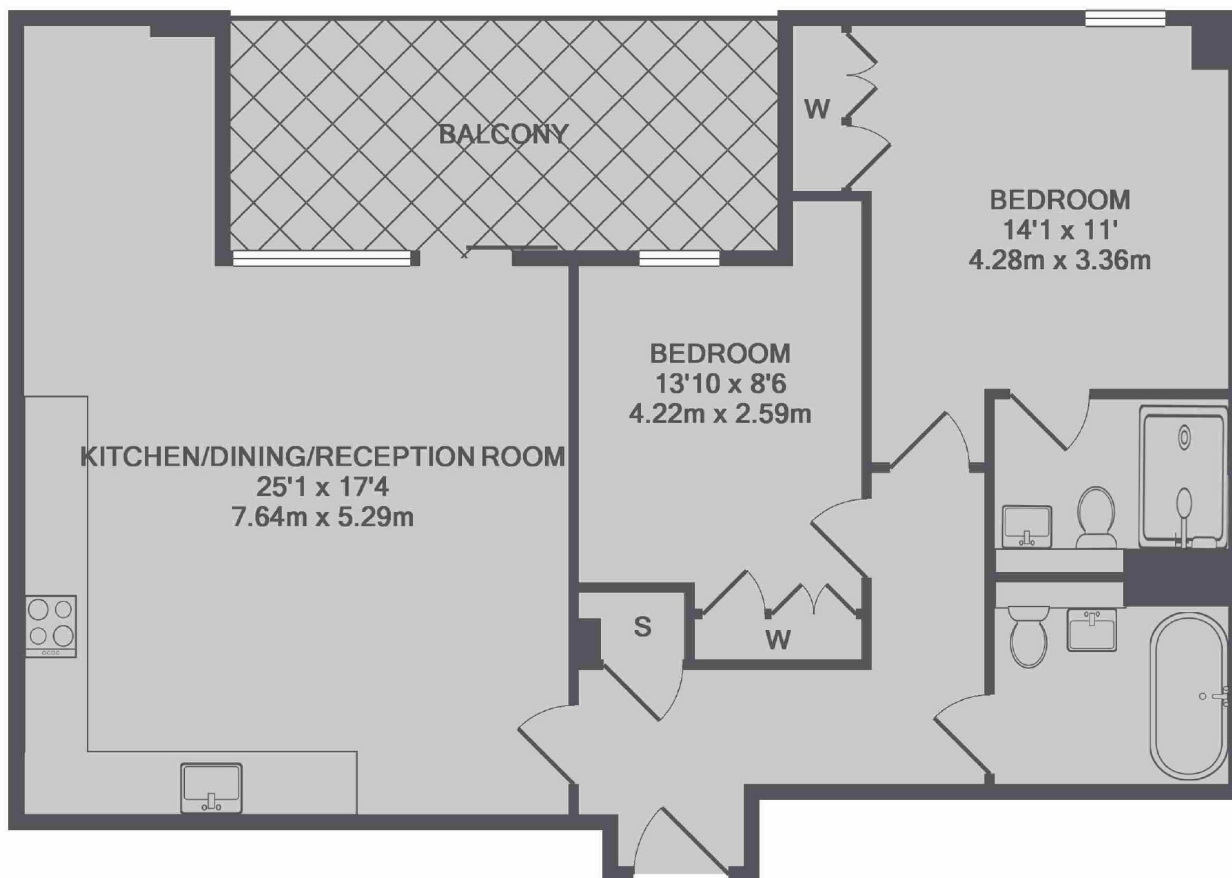
A two bedroom new build apartment on the second floor. The property has two bathrooms, an open plan reception, a private balcony and wooden flooring throughout. The property also comes with parking and access to a gym.

The Avenue is a sought-after residential road and within walking distance to Salusbury Road and Brondesbury Park Station.

Features

- Parking
- Two Bedrooms
- Two Bathrooms
- Gym
- Wood Flooring
- Great Location

The Avenue, London, NW6



TOTAL APPROX. FLOOR AREA 814 SQ.FT. (75.6 SQ.M.)

Dexters

Kensal Rise & Queen's Park
62 Chamberlayne Road
London
NW10 3JJ
Lettings
020 8600 3101

Energy Rating: B. We aim to make our particulars both accurate and reliable. However they are not guaranteed; nor do they form part of an offer or contract. If you require clarification on any points then please contact us, especially if you're traveling some distance to view. Please note that appliances and heating systems have not been tested and therefore no warranties can be given as to their good working order.

 **RICS** | Regulated
Estate Agent
and Letting Agent

[dexters.co.uk](https://www.dexters.co.uk)