



Palermo Road, NW10

£799,000

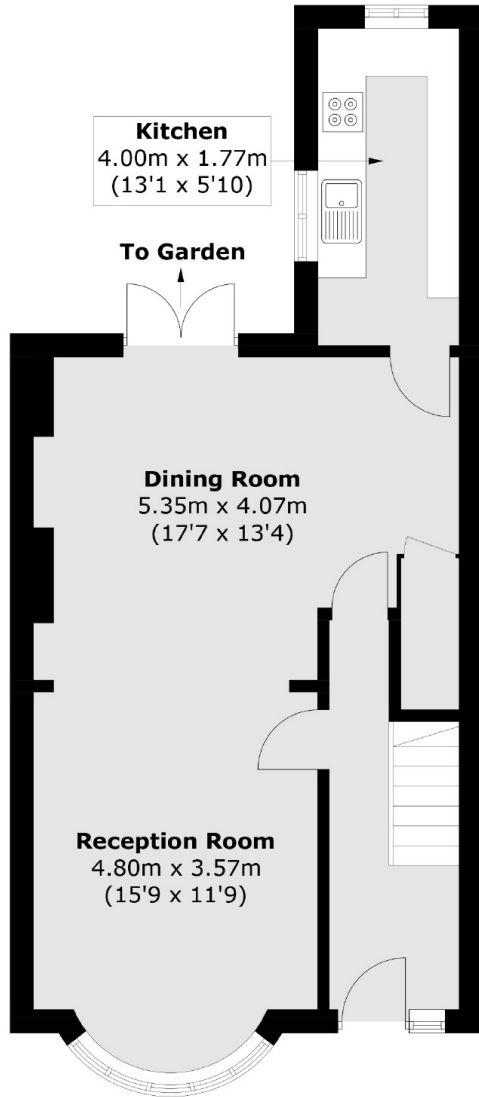
A three bedroom mid terraced period property with a south facing garden, configured over two floors, and with the potential to be extended. The property has a double reception room with a separate kitchen, the bedrooms with built-in storage and family bathroom on the first floor, and is available chain-free.

Palermo Road is a tree-lined residential street located close to the shops, cafes and amenities of Kensal Rise and Queen's Park. Transport links include Kensal Green (Bakerloo & Overground) and Willesden Junction (Bakerloo & Overground), with the addition of the newly developed Old Oak Common station.

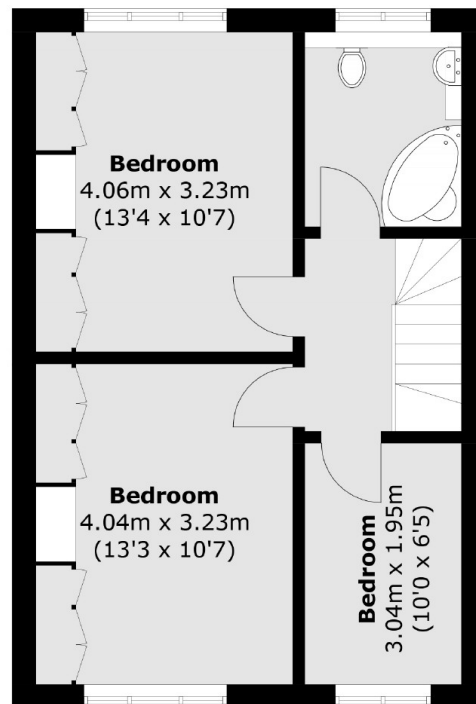
Features

- Three Bedrooms
- Separate Kitchen
- South Facing Garden
- Potential To Extend
- Chain-Free
- Close To Transport Links

Palermo Road, London, NW10



Ground Floor



First Floor

Total area (approx.): 97.1 sq. m (1,045.2 sq. ft)