



Hawthorn Walk, W10

£350,000

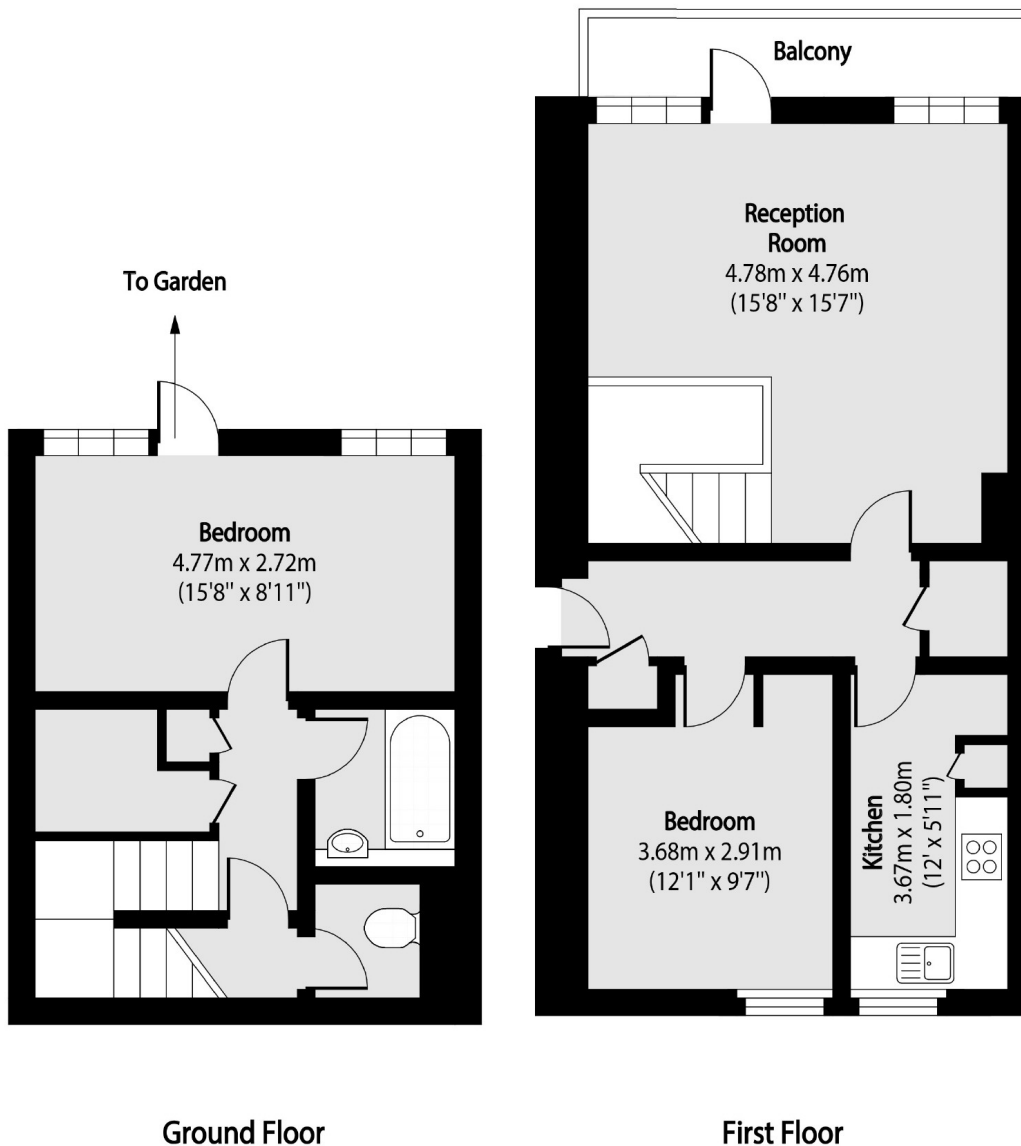
Split over two floors is this two double bedroom flat in a securely gated purpose-built development, with a south facing balcony on the first floor and a south facing patio garden on the ground floor. With a Separate kitchen, built-in storage throughout, the property is available chain-free.

Hawthorn Walk is located off Droop Street which is a tree-lined residential street with access to the shops, cafés, restaurants and bars in Kensal Rise and Notting Hill, and in close proximity to Queen's Park and Maida Vale. Transport links include Kensal Green (Bakerloo & Overground) and Westbourne Park (Circle, Hammersmith & City).

Features

- Two Double Bedrooms
- Split-Level
- Separate Kitchen
- Garden & Balcony
- Secure Purpose-Built Building
- Chain-Free

Hawthorn Walk, London, W10



Total area (approx): 76.95 sq m (828 sq. ft)

Balcony total area (approx): 4.50 sq m (48 sq. ft)

Dexters

Kensal Rise & Queen's Park
62 Chamberlayne Road
London
NW10 3JJ

Sales
020 8600 3100

Energy Rating: C. We aim to make our particulars both accurate and reliable. However they are not guaranteed; nor do they form part of an offer or contract. If you require clarification on any points then please contact us, especially if you're traveling some distance to view. Please note that appliances and heating systems have not been tested and therefore no warranties can be given as to their good working order.

 **RICS** | Regulated
Estate Agent
and Letting Agent

[dexters.co.uk](https://www.dexters.co.uk)