



Earlsmead Road, NW10

£845,000

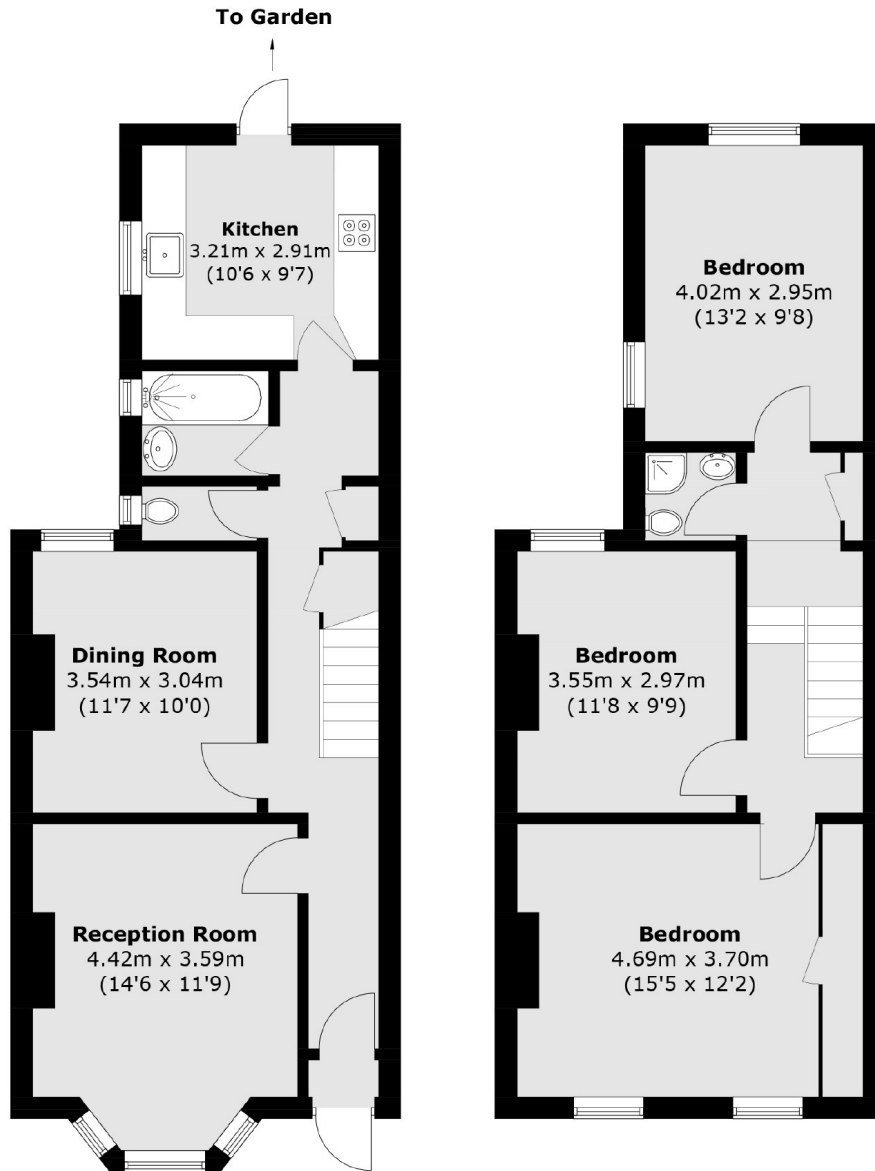
A three bedroom mid-terraced Victorian house on popular Earlsmead Road, offering generous proportions and excellent potential. In need of modernisation, the property features two reception rooms, separate kitchen, three bedrooms, bathroom, and a private garden.

Earlsmead Road is located in the heart of Kensal Green Grid, within easy reach to Kensal Rise & Queen's Park. Kensal Green Station is just 0.1 miles away providing excellent connections via the Bakerloo line and Overground. Local bus routes also serve the area, offering links to Wembley, Kilburn, and central London.

Features

- Three Bedrooms
- Two Bathrooms
- In Need of Modernisation
- Kensal Green Station
- Terraced House
- Chain Free

Earlsmead Road, London, NW10



Ground Floor

First Floor

Total area (approx.): 104.9 sq. m (1129.1 sq. ft)