



St. Margarets Road, NW10

£599,999

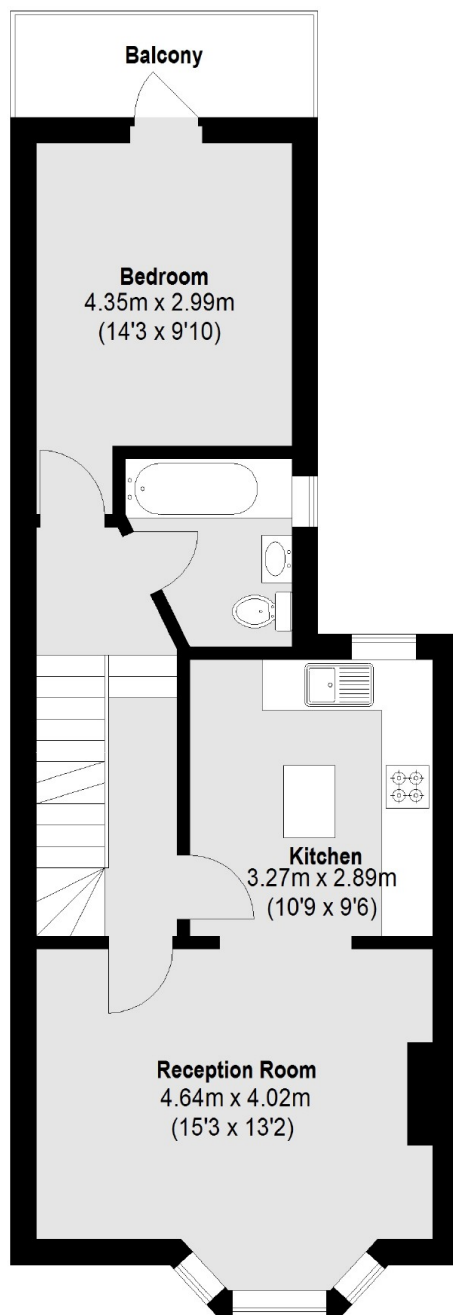
A spacious two double bedroom first floor flat arranged over two floors of a Victorian conversion flooded with natural light, with a balcony to the rear. The property benefits from having a large west facing reception room and semi separate fully integrated kitchen, two bathrooms, and is available chain-free.

St. Margarets Road is a quiet, residential street located close to the shops, cafes, restaurants and bars on College Road and Chamberlayne Road, and the green open spaces of Queen's Park. Transport links include Kensal Green (Bakerloo & Overground) and Kensal Rise (Overground).

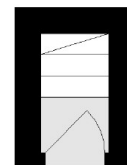
Features

- Two Double Bedrooms
- Two Bathrooms
- First Floor Flat
- West Facing Reception
- Chain-Free
- Close To Transport Links

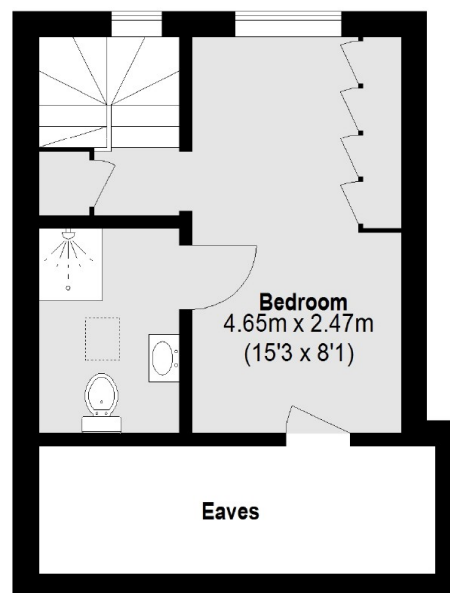
St. Margarets Road, London, NW10



First Floor



Ground Floor



Second Floor

Total area (approx.): 71.87 sq. m (774 Sq. ft)
(Excluding Eaves)
Balcony: 4.20 sq. m (45 Sq. ft)