



## Willesden Lane, NW6

### £400,000

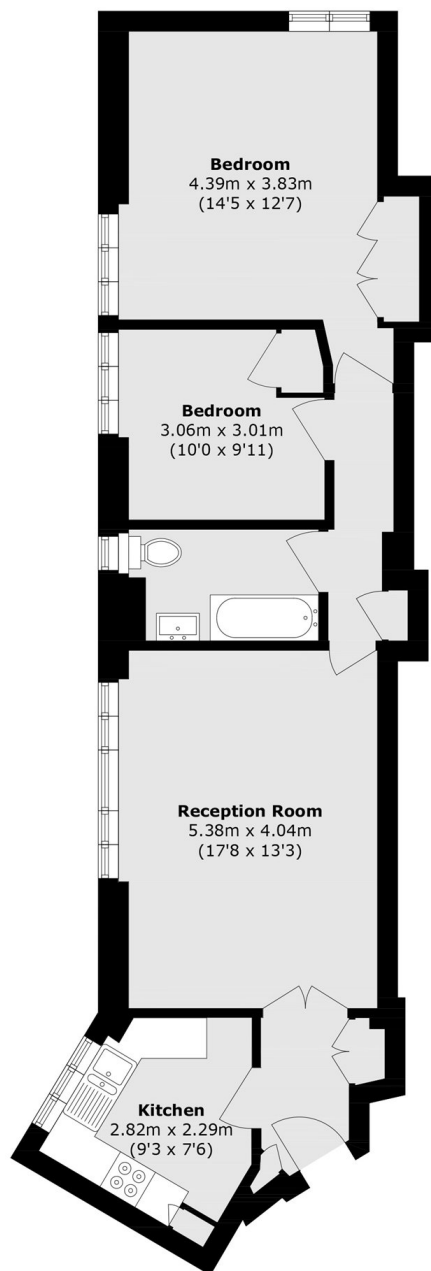
Set within a secure Art Deco designed purpose-built block is this spacious two double bedroom flat located on the first floor with lift access. The property has a separate kitchen, built-in storage throughout, communal gardens, and is available chain-free.

Willesden Lane provides access to the shops, cafes, and bars and restaurants on the High Road in Willesden, Salusbury Road in Queen's Park, and close to West Hampstead. Transport links include Willesden Green (Jubilee), Brondesbury Park (Overground) and Queen's Park (Bakerloo & Overground).

### Features

- Two Double Bedrooms
- First Floor Flat
- Separate Kitchen
- Lift Access
- Communal Gardens
- Chain-Free

# Willesden Lane, London, NW6



Total area (approx.): 69.4 sq. m (747.0 sq. ft)