



Heather Walk, W10

£375,000

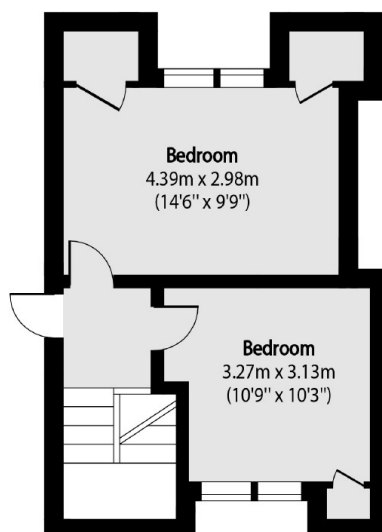
A light and spacious two double bedroom flat in a securely gated purpose-built development, with a private balcony. The property is configured over two floors with a semi-open kitchen and dining area, a separate reception room, built-in storage, and is available chain-free.

Heather Walk is located off Droop Street which is a tree-lined residential street with access to the shops, cafés, restaurants and bars in Kensal Rise and Notting Hill, and in close proximity to Queen's Park and Maida Vale. Transport links include Kensal Green (Bakerloo & Overground) and Westbourne Park (Circle, Hammersmith & City).

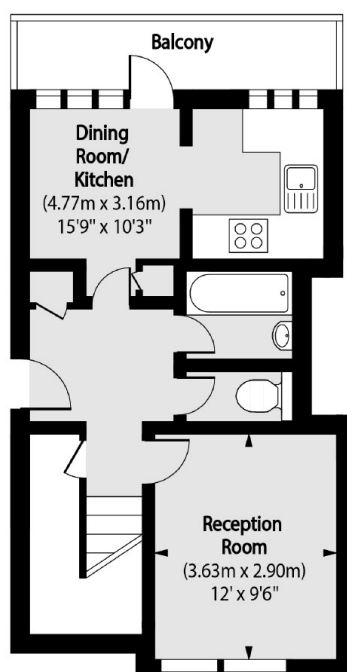
Features

- Two Double Bedrooms
- Split-Level
- Semi-Open Kitchen & Dining
- Balcony
- Secure Purpose-Built Building
- Chain-Free

Heather Walk, London, W10



Third Floor



Second Floor

Total area (approx): 72.77 sq m (783 sq. ft)

Balcony total area (approx): 5.61 sq m (60 sq. ft)