



Emerald Road, NW10

£335,000

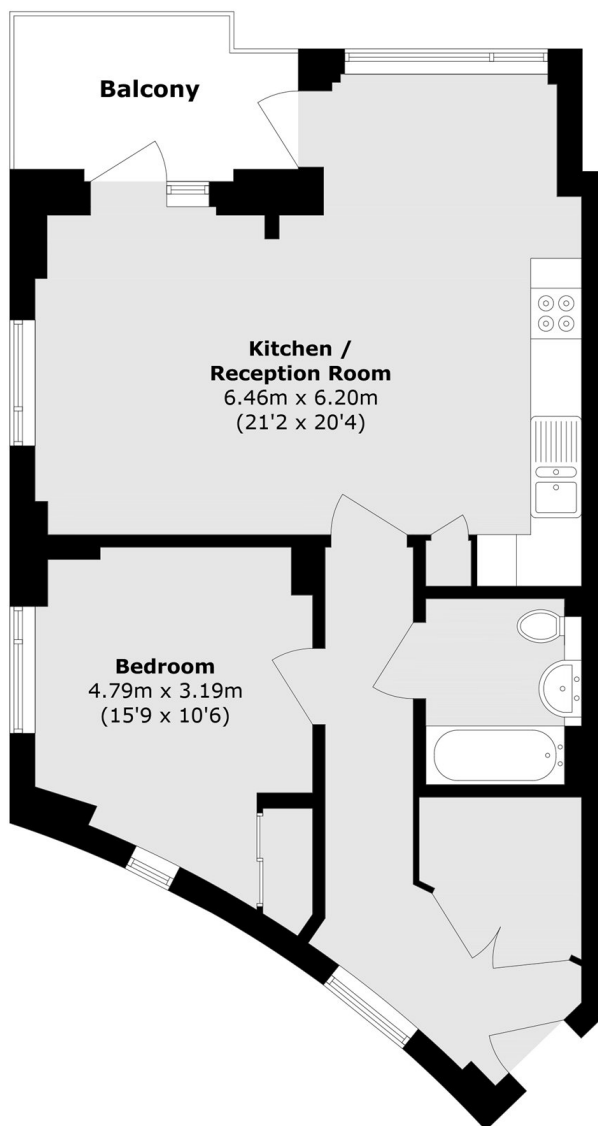
Set within a modern secure development is this one bedroom flat on the first floor with lift access. Kept in excellent condition throughout, the property has a south facing balcony and communal garden, fully integrated kitchen, allocated parking and bike storage, and is available chain-free.

Harmony House is located on Emerald Road near to the shops, cafes and amenities on Craven Park and Harlesden High Street, and in close proximity to Roundwood Park. Transport links include Harlesden (Bakerloo & Overground) and Stonebridge Park (Bakerloo & Overground).

Features

- One Bedroom
- South Facing Balcony
- Excellent Condition
- Lift Access
- Allocated Parking
- Chain-Free

Emerald Road, London, NW10



Total area (approx.): 60.8 sq. m (654.4 sq. ft)
Balcony area (approx.): 6.2 sq. m (66.7 sq. ft)