



Kilburn Lane, W10

£400,000

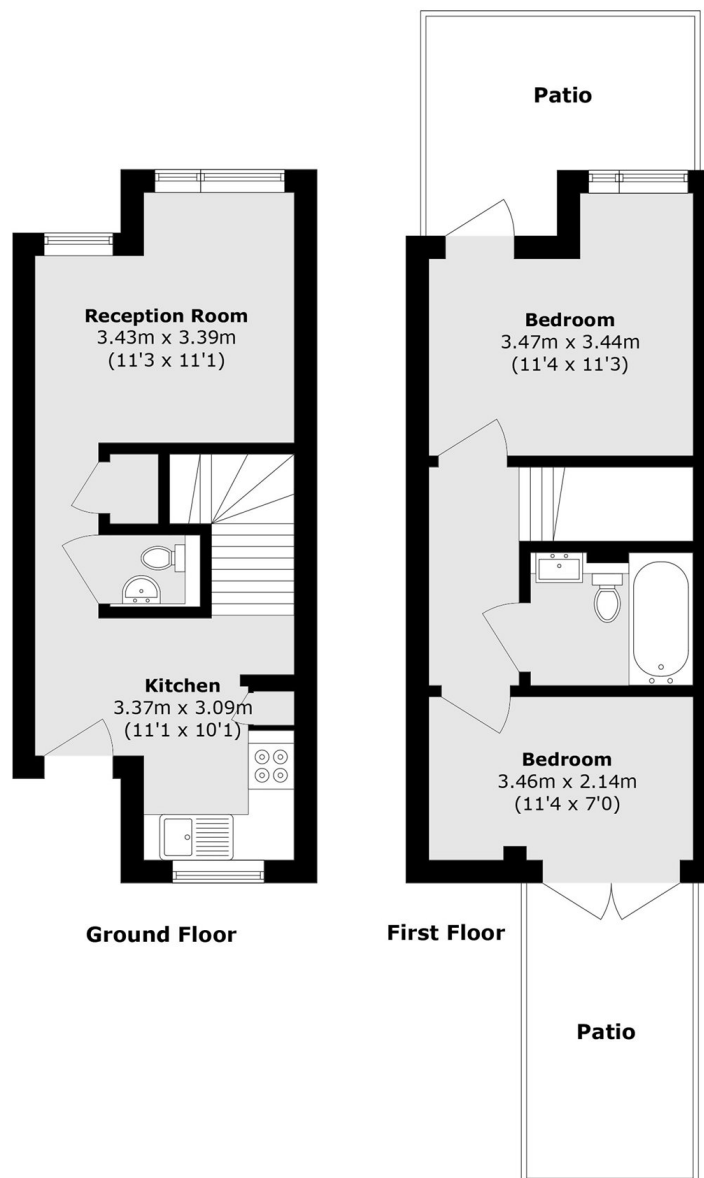
This two-bedroom split-level maisonette in a modern purpose-built gated development provides front and rear patios on the ground floor, an open plan kitchen and living area, a family bathroom, a separate WC, built-in storage, and is available chain-free.

Kilburn Lane is in close proximity to local shops, cafes, restaurants and bars on Chamberlayne Road, and Salusbury Road in Queen's Park, along with the green open spaces. Ideal for commuters, located just 0.5 miles from Kensal Green and Queen's Park stations (Bakerloo, London Overground, Zone 2).

Features

- Two Bedroom
- Split-Level Flat
- Private Patio Garden
- Good Condition
- Chain Free
- Close To Transport Links

Kilburn Lane, London, W10



Total area (approx.): 55.0 sq. m (592.0 sq. ft)

Patio area (approx.): 16.9 sq. m (181.9 sq. ft)