



Minet Avenue, NW10

£800,000

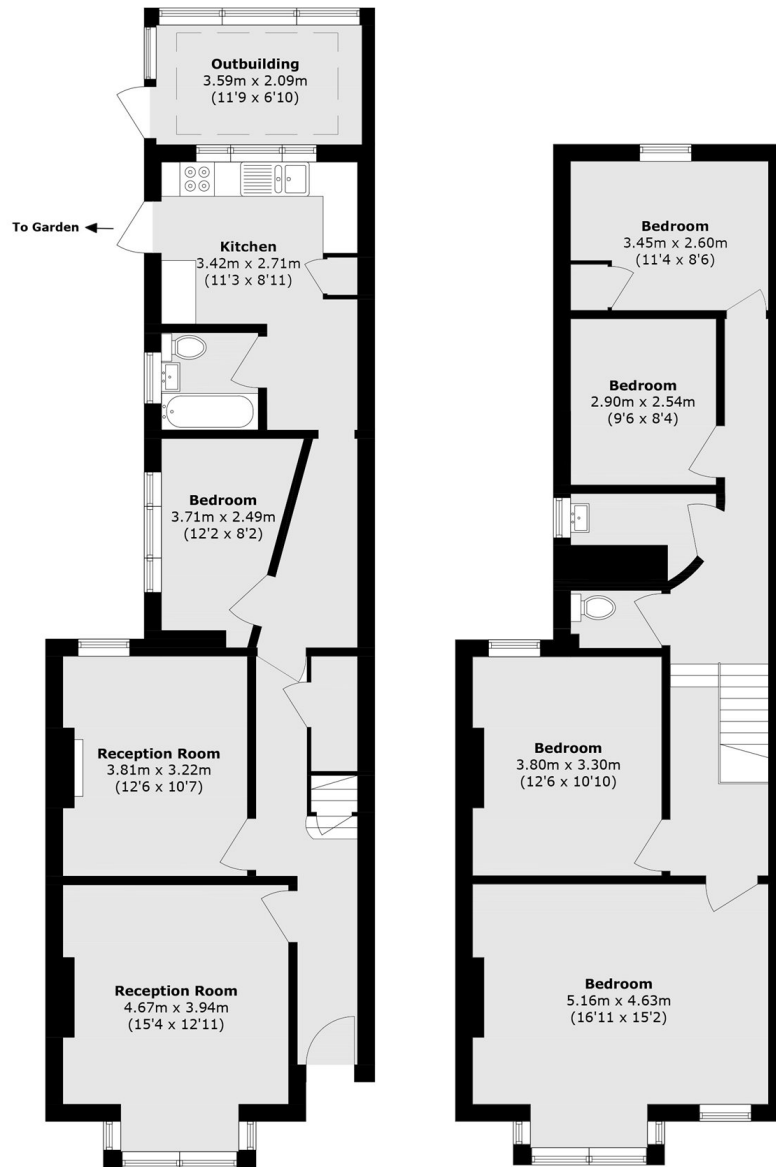
A spacious five bedroom mid terraced Victorian house, configured over two floors, with the potential to be extended at the rear and into the loft space. The property is set up with two reception rooms to the front, a conservatory style outbuilding to the rear, and is available chain-free.

Minet Avenue a tree-lined quiet residential street located close to the shops and local amenities on Harlesden High Street. Transport links includes Harlesden (Bakerloo & Overground), Willesden Junction (Bakerloo & Overground), numerous bus routes, and the newly developed Old Oak Common station.

Features

- Freehold
- Five Bedrooms
- Two Reception Rooms
- Separate Kitchen
- Potential To Extend
- Chain-Free

Minet Avenue, London, NW10



Ground Floor

First Floor

Total area (approx.): 142.2 sq. m (1530.6 sq. ft)
Outbuilding area (approx.): 7.5 sq. m (80.7 sq. ft)