



## Coverdale Road, NW2

**£623** Per week

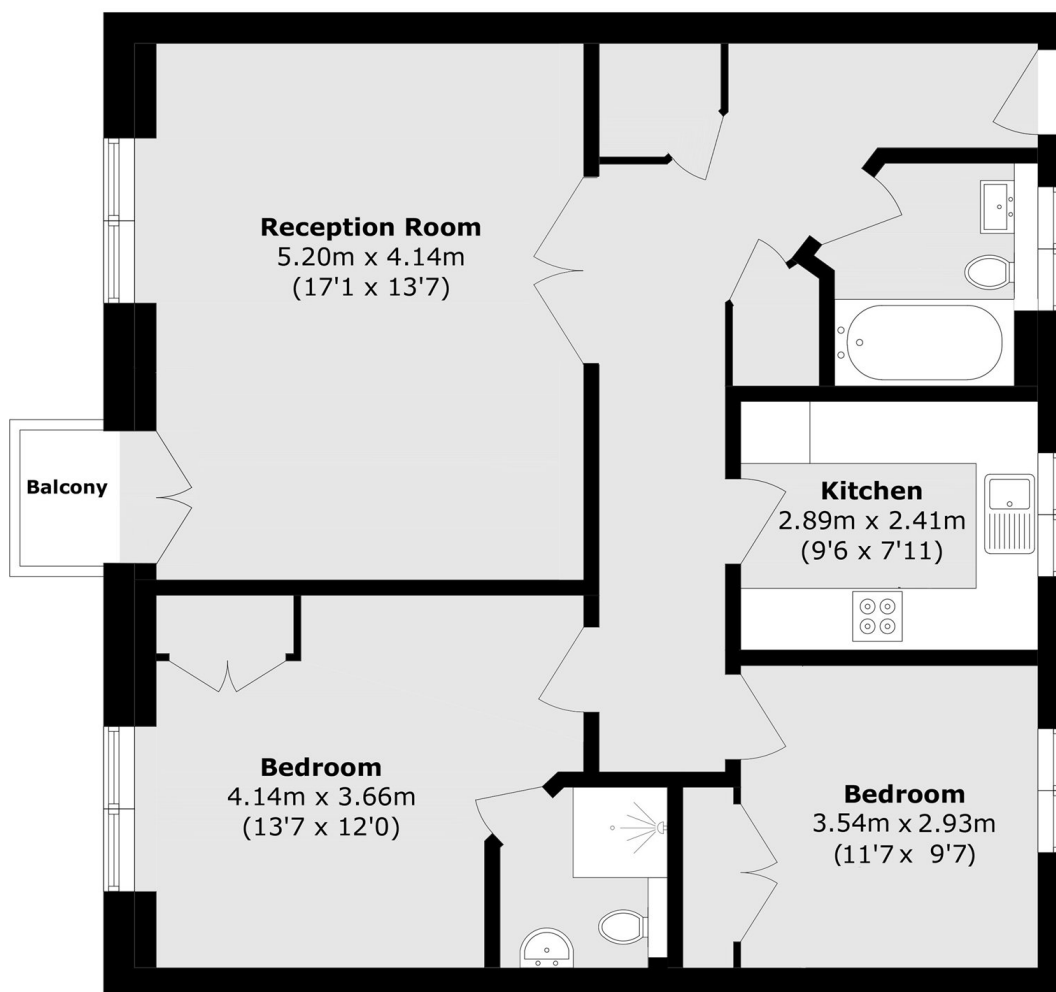
A generous and newly decorated first floor two bedroom two bathroom apartment set in a secure purpose built development with a private balcony and off street parking.

Kingsbridge Court is situated in an ideal position close to numerous transport links such as Kilburn (Jubilee line Zone 2), Brondesbury Overground, and Queens Park (Bakerloo line Zone 2) stations, plus numerous bus routes into the city.

### Features

- Two Bedroom
- Two Bathroom
- Balcony
- Off Street Parking
- First Floor
- Newly Decorated

# Coverdale Road, London, NW2



Total area (approx.): 76.3 sq. m (821.2 sq. ft)