



Greyhound Road, NW10
£1,300,000

Dexters



Greyhound Road, NW10

This beautifully extended four bedroom home features two bathrooms, a spacious double reception, and a separate kitchen opening onto a west-facing garden. Presented in excellent condition throughout, it offers generous, light-filled living spaces ideal for modern family life.

The ground floor offers a double reception room with high ceilings and bespoke joinery. To the rear, the living space provides direct access to a stunning kitchen with a side return extension. The kitchen runs along one side and is crafted in birch plywood, with wide doors opening directly onto the outdoor space.

On the first floor, there are three generously sized double bedrooms and a family bathroom. The loft conversion provides a spacious principal bedroom with an en suite shower room, a Juliet balcony, and extensive eaves storage.

Greyhound Road sits within a popular part of Kensal Rise. It is ideally located for quick access to the local amenities of College Road and Chamberlayne Road, as well as excellent delis, bakeries, restaurants, and shops along this section of Harrow Road. Kensal Green station (Bakerloo Line and London Overground) is just 0.2 miles, with Notting Hill and Queen's Park also within easy reach.

Features

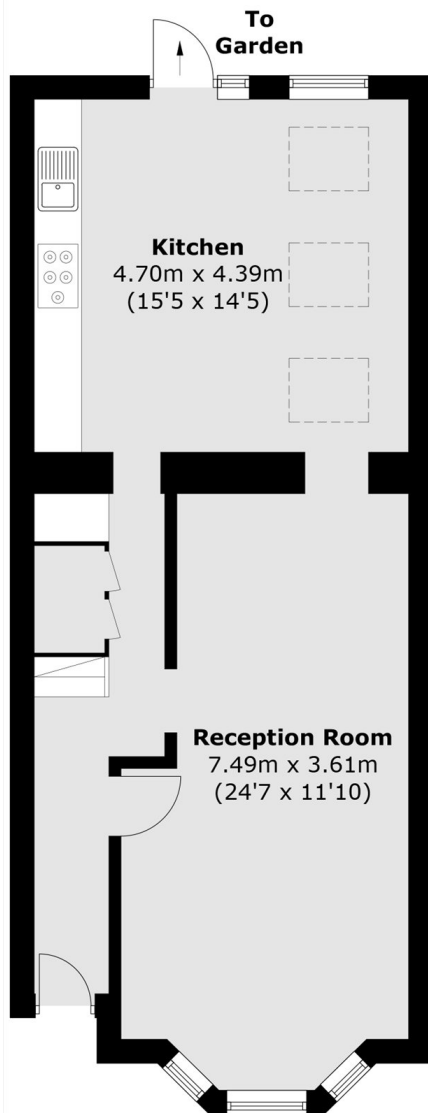
- Four Bedrooms
- Two Bathrooms
- West-Facing Garden
- Ample Storage
- Prime Location
- Close to Amenities



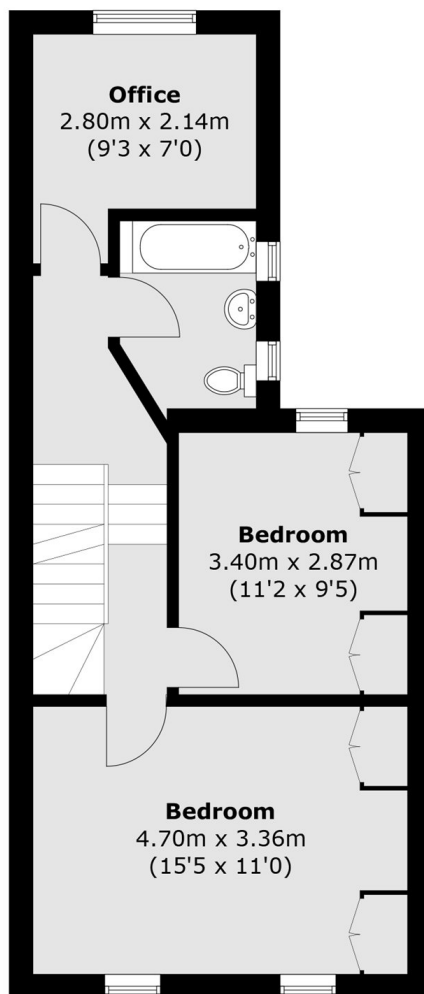




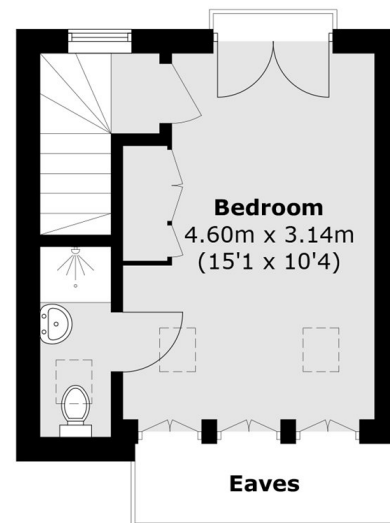
Greyhound Road, London, NW10



Ground Floor



First Floor



Second Floor

Total area (approx.): 122.4 sq. m (1,317.4 sq. ft)
(Excluding Eaves)