

Neasden Lane, NW10

£325,000

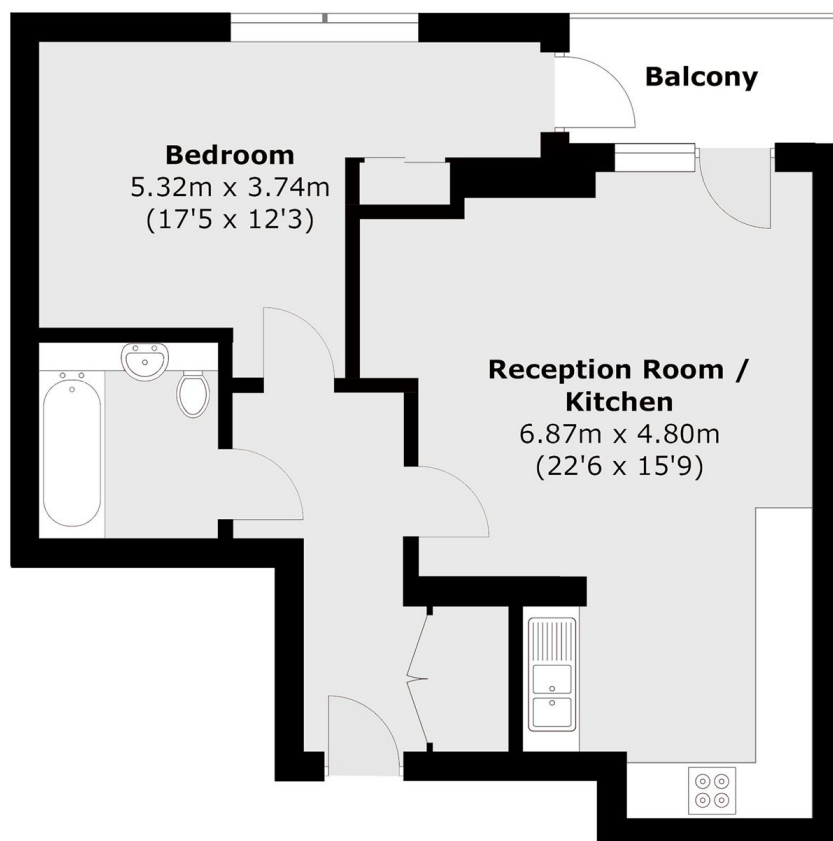
Set on the second floor of a modern development is this stylish one bedroom flat featuring high-quality finishes throughout. The open-plan living space flows seamlessly onto a west-facing private winter garden, creating a bright and inviting home.

The property is just moments from the green open spaces of Roundwood Park, with Neasden station nearby for excellent transport links across the city. Willesden High Road, with its shops, cafés, and amenities, is also just a short distance away.

Features

- One Bedroom
- Private Winter Garden
- Excellent Condition
- Lift Access
- Close to Transport
- Chain Free

Neasden Lane, London, NW10



Second Floor

Total area (approx.): 53.3 sq. m (573.7 sq. ft)
Balcony : 3.7 sq. m (39.8 sq. ft)