



Hetherington Road, SW4

£2,950 PCM

LONG LET. A superb detached house is offered in impeccable condition throughout and benefits from a private gated driveway and beautifully landscaped garden.

- Detached House
- Private Gated Driveway
- Landscaped Rear Garden
- Two Double Bedrooms
- Modern Kitchen
- Bathroom With Shower

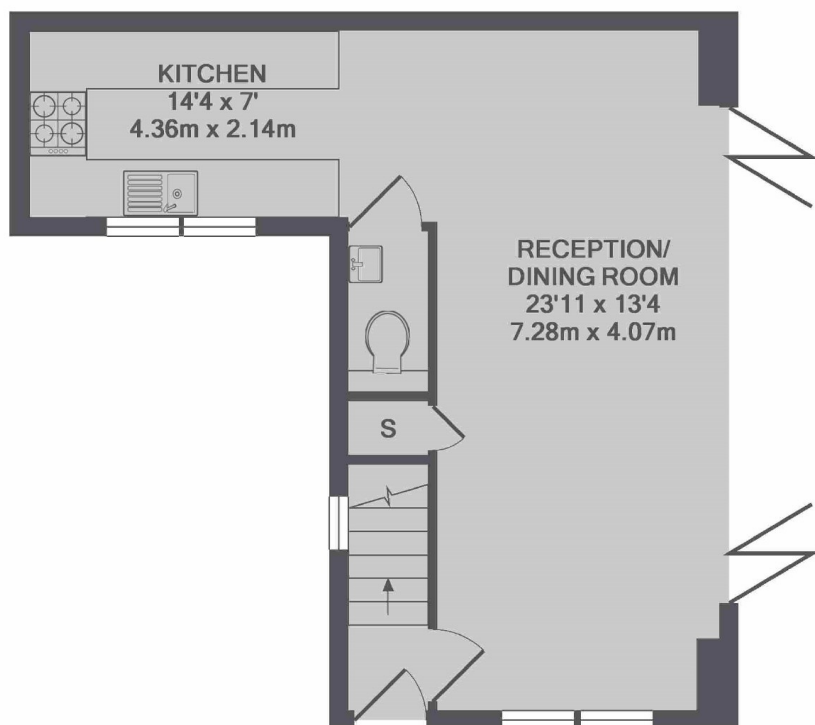
For further information on the costs associated with renting a property, please pop into our office or visit our website.



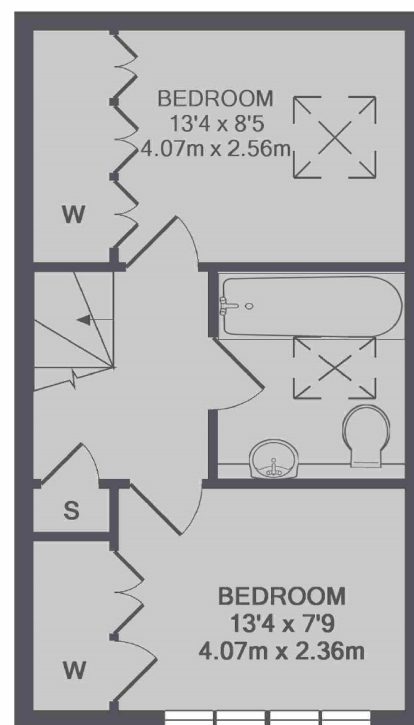
Internally the property comprises entrance hall leading to stairs, spacious reception/ dining room with bi-fold doors leading to garden, modern fitted kitchen, downstairs W/C, two double bedrooms each with fitted wardrobes and a modern tiled family bathroom with shower over bath. Outside there is a private gated driveway and a beautifully landscaped garden which is mainly laid to lawn with timber decking and mature shrubs and trees.

The property is located on a quiet residential road within a seven minute walk of Clapham North tube (Northern Line) and a twelve minute walk of Brixton tube (Victoria Line). The amenities of Clapham High Street are within easy reach and Abbeville Village is only a ten minute walk away boasting an array of independent shops, cafes and restaurants.





GROUND FLOOR



1ST FLOOR

TOTAL APPROX. FLOOR AREA 715 SQ.FT. (66.4 SQ.M.)

Jacksons Clapham
73 Abbeville Road
London
SW4 9JN
020 8875 7995
clapham.lettings@jacksonsestateagents.com

Energy Rating: C We aim to make our particulars both accurate and reliable. However they are not guaranteed; nor do they form part of an offer or contract. If you require clarification on any points then please contact us, especially if you're traveling some distance to view. Please note that appliances and heating systems have not been tested and therefore no warranties can be given as to their good working order.