



RATHMELL DRIVE, SW4

£375,000

- Two bedrooms
- Second floor
- Purpose built
- Communal garden
- Well presented
- Energy rating: C







## ABOUT THE HOME

A superb two bedroom flat set on the 2nd floor of a purpose built block on a quiet residential street. Other benefits include a communal garden and private secure storage.

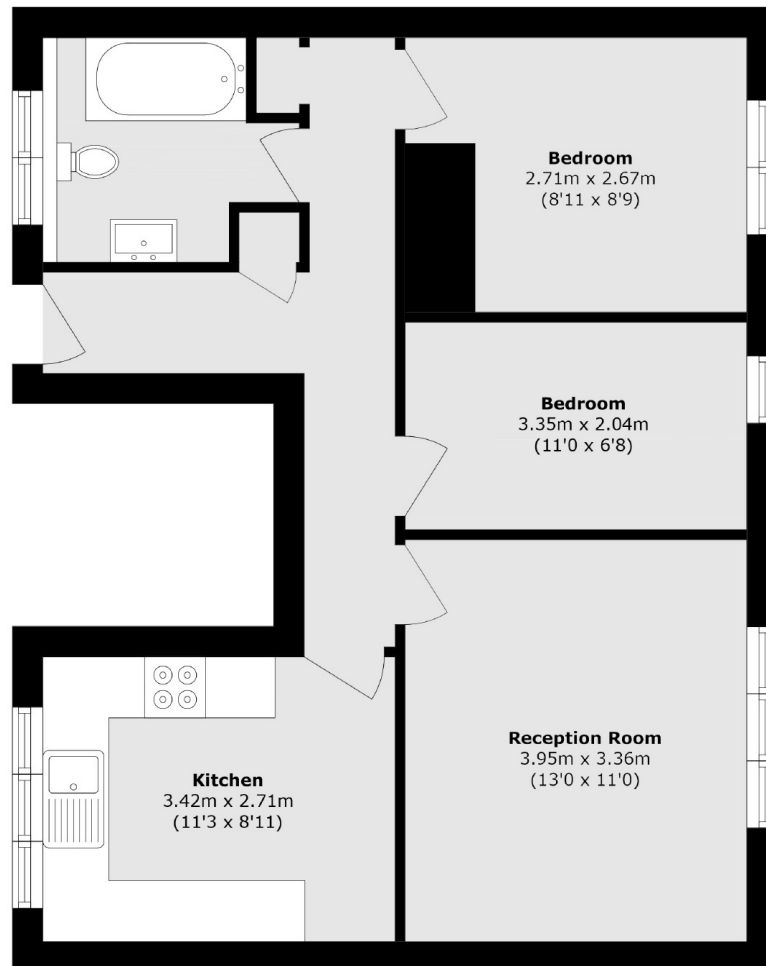
Rathmell Drive is a residential road located off Clarence Avenue. Clapham South Underground station is within close proximity being less than a mile away, while Kings Avenue offers plentiful buses with routes to Clapham Common, Clapham North and Brixton.











Total area (approx.): 54.3 sq. m (584.4 sq. ft)

#### JACKSONS CLAPHAM

73 Abbeville Road, London,

SW4 9JN

Sales: 020 8487 3177

Lettings: 020 8487 3178

Energy Rating: C We aim to make our particulars both accurate and reliable. However they are not guaranteed; nor do they form part of an offer or contract. If you require clarification on any points then please contact us, especially if you're traveling some distance to view. Please note that appliances and heating systems have not been tested and therefore no warranties can be given as to their good working order.