



ARISTOTLE ROAD, SW4

£570,000

- Two bedrooms
- Purpose built flat
- Share of freehold
- Excellent transport links
- Popular location
- EPC Rating: C





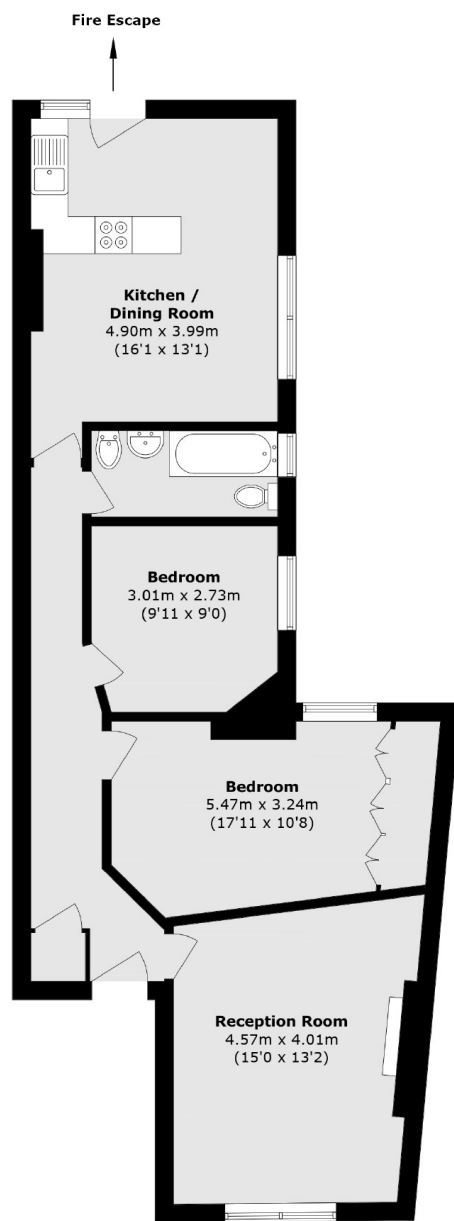
ABOUT THE HOME

A tremendously light and spacious two double bedroom purpose built flat which offers versatile accommodation.

Aristotle Road is a popular residential road close to Clapham North station (Northern line) and Clapham High Street station (Windrush line). The property is within easy walking distance of shops, bars and restaurants with exceptional transport links via Underground, Overground and bus all close by.







Total area (approx.): 79.4 sq. m (854.6 sq. ft)

JACKSONS CLAPHAM

73 Abbeville Road, London,

SW4 9JN

Sales: 020 8487 3177

Lettings: 020 8487 3178

Energy Rating: C We aim to make our particulars both accurate and reliable. However they are not guaranteed; nor do they form part of an offer or contract. If you require clarification on any points then please contact us, especially if you're traveling some distance to view. Please note that appliances and heating systems have not been tested and therefore no warranties can be given as to their good working order.