



FLUTEMAKERS MEWS, SW4

£530,000

- One bedroom
- Modern finish
- Quiet location
- Off street parking
- Gated development
- Energy rating: C





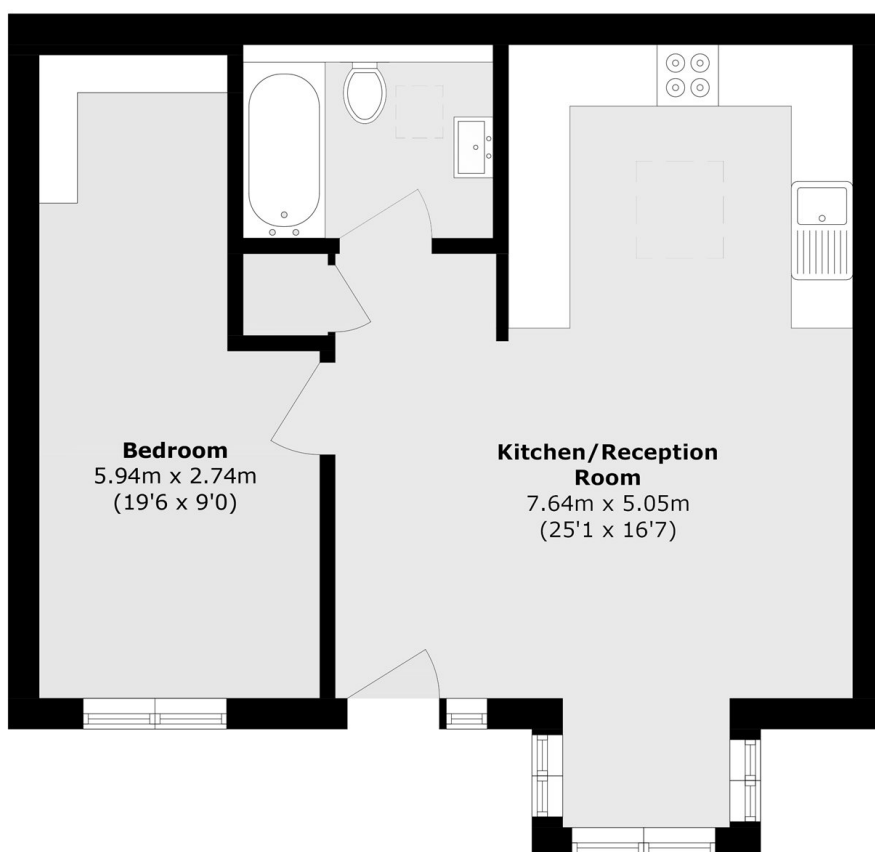
ABOUT THE HOME

Nestled within an exclusive private gated mews, this charming one bedroom freehold house offers a rare blend of privacy, style and convenience. Set back from the road in a peaceful, beautifully maintained development, the property features a bright open-plan living space, a modern fitted kitchen, and a well-proportioned double bedroom with built-in storage. With its own front door and allocated parking, this home provides an exceptional opportunity for first-time buyers, downsizers or those seeking a secure pied-à-terre.

Flutemakers Mews is situated close to Abbeville Village and the many popular shops and restaurants of Abbeville Road. Located to the south of Clapham Common the property benefits from its excellent facilities and open green spaces. Clapham Common (Northern line) Underground station serves the City and West End, while several bus routes also run close by.







Total area (approx.): 52.7 sq. m (567.2 sq. ft)

JACKSONS CLAPHAM

73 Abbeville Road, London,
SW4 9JN

Sales: 020 8487 3177

Lettings: 020 8487 3178

Energy Rating: C We aim to make our particulars both accurate and reliable. However they are not guaranteed; nor do they form part of an offer or contract. If you require clarification on any points then please contact us, especially if you're traveling some distance to view. Please note that appliances and heating systems have not been tested and therefore no warranties can be given as to their good working order.