



HETHERINGTON ROAD, SW4

£850,000

- Freehold
- Two double bedrooms
- Open plan
- Private garden
- Parking
- Energy rating: C



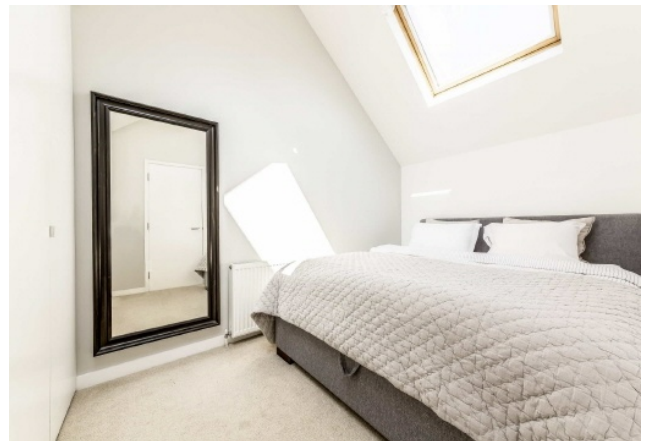




## ABOUT THE HOME

A superb and rarely available two bedroom detached freehold house. The property comprises an open plan reception/dining/kitchen with bi-folding doors leading to the garden, downstairs cloakroom/WC and generous storage; to the first floor are two double bedrooms with fitted wardrobes and a family bathroom. The property also benefits from off street parking and is offered to the market chain free.

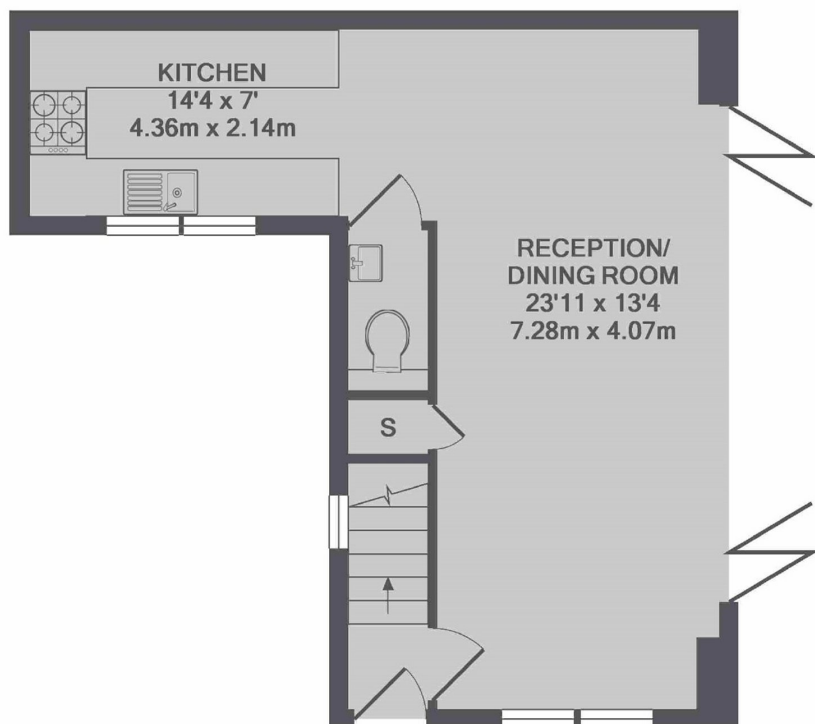
Situated between Clapham and Brixton, Hetherington Road offers easy access to the shops, bars and restaurants of Abbeville Village, Clapham Old Town and Brixton Market. Transport links include Clapham North (Northern line), Brixton (Victoria line), Clapham High Street (Windrush line) Overground as well as numerous bus routes into the City and West End.



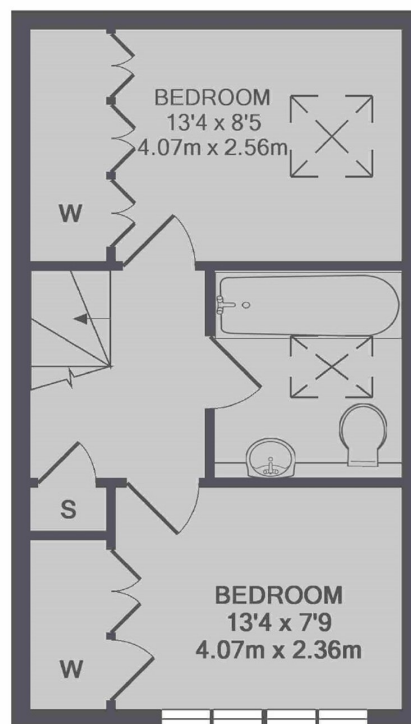








GROUND FLOOR



1ST FLOOR

TOTAL APPROX. FLOOR AREA 715 SQ.FT. (66.4 SQ.M.)

**JACKSONS CLAPHAM**

73 Abbeville Road, London,

SW4 9JN

Sales: 020 8487 3177

Lettings: 020 8487 3178

Energy Rating: C We aim to make our particulars both accurate and reliable. However they are not guaranteed; nor do they form part of an offer or contract. If you require clarification on any points then please contact us, especially if you're traveling some distance to view. Please note that appliances and heating systems have not been tested and therefore no warranties can be given as to their good working order.