



HASELRIGGE ROAD, SW4

£665,000

- Freehold house
- Two bedrooms
- Separate kitchen
- Off street parking
- South west facing garden
- Energy rating: C







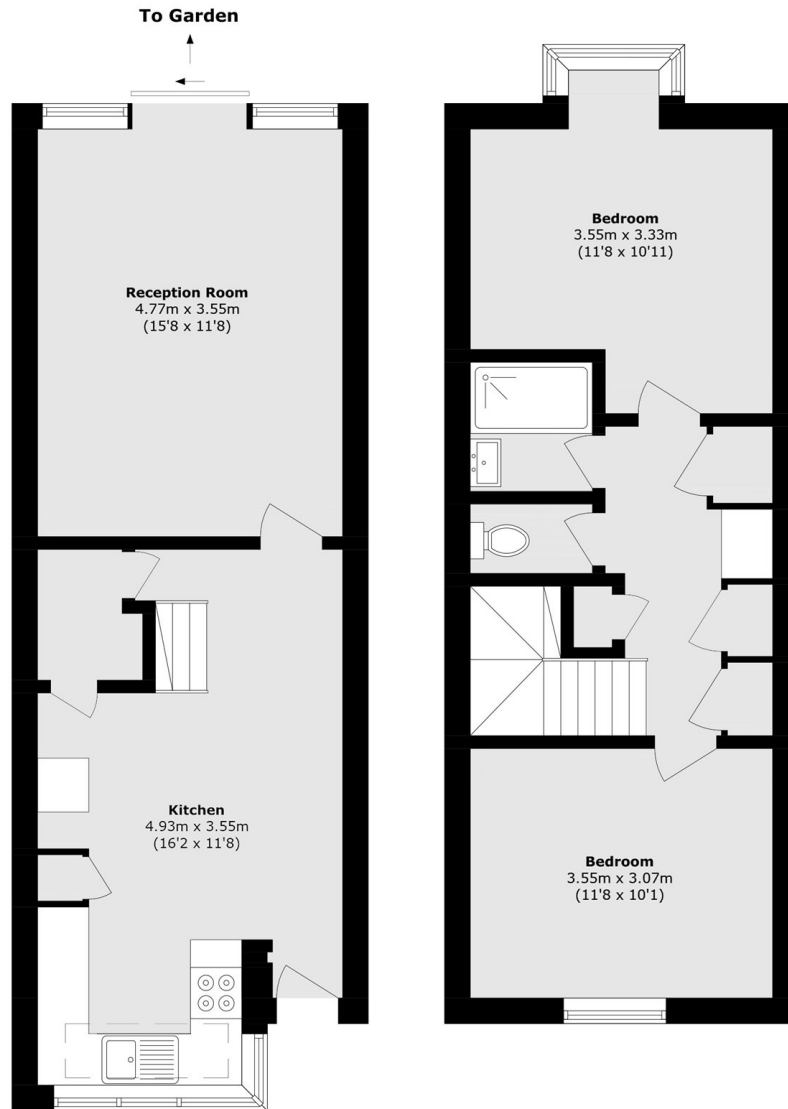
## ABOUT THE HOME

A modern terraced two double bedroom freehold house with off street parking to the front and a private south west facing garden.

Haselrigge Road is a quiet residential road situated within walking distance of the shops, bars and restaurants of Clapham High Street and the green open space of Clapham Common. Commuters have a choice of Clapham North (Northern line) Underground and Clapham High Street (Windrush line) Overground stations (0.4 mile), while regular bus routes to the City and West End also run close by.







Total area (approx.): 75.4 sq. m (811.6 sq. ft)

### JACKSONS CLAPHAM

73 Abbeville Road, London,

SW4 9JN

Sales: 020 8487 3177

Lettings: 020 8487 3178

Energy Rating: C We aim to make our particulars both accurate and reliable. However they are not guaranteed; nor do they form part of an offer or contract. If you require clarification on any points then please contact us, especially if you're traveling some distance to view. Please note that appliances and heating systems have not been tested and therefore no warranties can be given as to their good working order.