



LOUGHBOROUGH PARK, SW9

£570,000

- Two bedrooms
- Two bathrooms
- Private terrace
- Third floor with lift access
- Chain free
- Energy rating: B



2



2



1



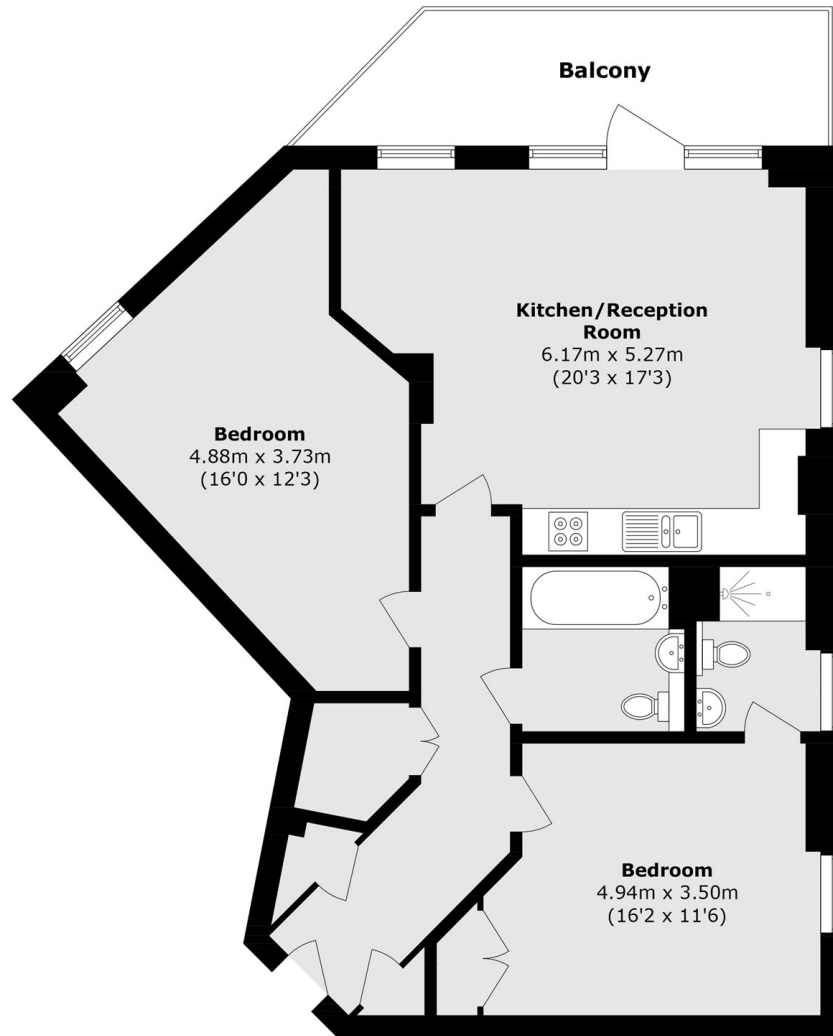
ABOUT THE HOME

A superb two bedroom, two bathroom third floor flat with a large south-east facing terrace. The property is finished to a high standard throughout and is offered to market chain free.

Lightford House is located on Loughborough Park, offering close proximity to the high street shops, cafés and bars of both Brixton and neighbouring Herne Hill with its independent shops and village feel. Brockwell Park is a short stroll, while transport links include Brixton (Victoria line) Underground (0.5 mile) and Loughborough Junction (Thameslink) station (0.6 mile).







Total area (approx.): 83.7 sq. m (900.9 sq. ft)
Balcony area (approx.): 10.5 sq. m (113 sq. ft)

JACKSONS CLAPHAM

73 Abbeville Road, London,
SW4 9JN

Sales: 020 8487 3177

Lettings: 020 8487 3178

Energy Rating: B We aim to make our particulars both accurate and reliable. However they are not guaranteed; nor do they form part of an offer or contract. If you require clarification on any points then please contact us, especially if you're traveling some distance to view. Please note that appliances and heating systems have not been tested and therefore no warranties can be given as to their good working order.