



WELMAR MEWS, SW4

£3,200 PCM

- Two double bedrooms
- Two bathrooms
- Newly refurbished
- Secure entry system
- Private mews development
- Energy rating: C

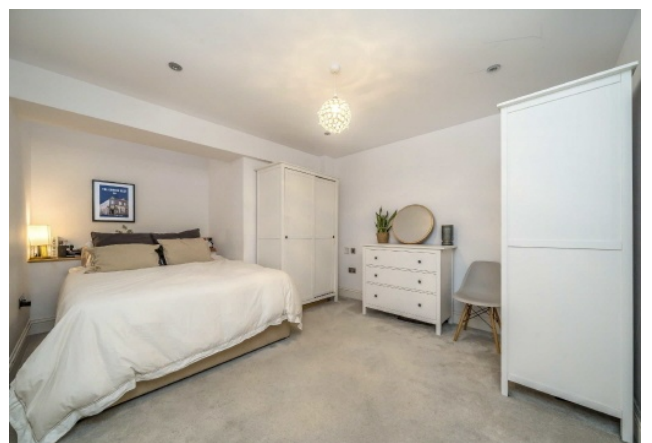




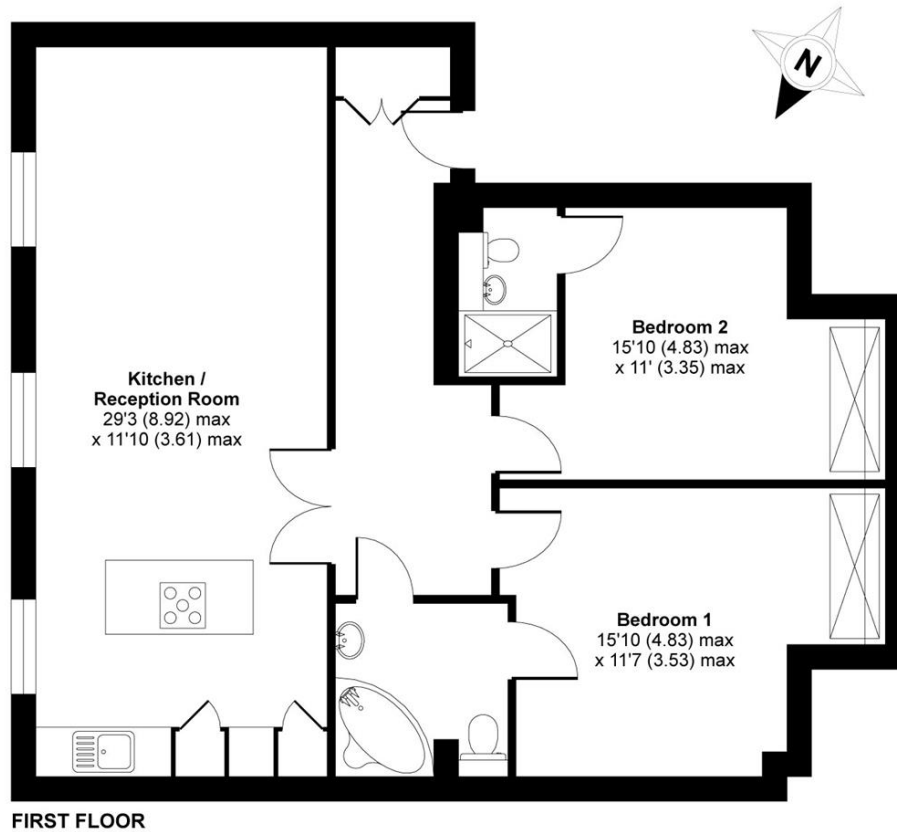
ABOUT THE HOME

A stylish two bedroom, two bathroom flat located in a prestigious mews development within close proximity to Clapham Common. The property comprises an entrance hall, open plan kitchen/dining/reception, two double bedrooms and two bathrooms. Suitable for a couple or two professional sharers.

Welmar Mews is situated within a five minute walk of Clapham Common (Northern line) Underground station and numerous bus routes offering convenient commuting to the City and West End; Clapham High Street (Windrush line) overground station is also within walking distance (0.6 mile). The shops, bars and restaurants of Clapham Old Town and High Street are within easy reach.







APPROX. GROSS INTERNAL FLOOR AREA 862 SQ FT 80 SQ METRES

Welmar Mews, London, SW4

Copyright nichecom.co.uk 2017 Produced for Jacksons the Independent Estate Agents REF : 179536

JACKSONS CLAPHAM

73 Abbeville Road, London,
SW4 9JN

Sales: 020 8487 3177

Lettings: 020 8487 3178

Energy Rating: C We aim to make our particulars both accurate and reliable. However they are not guaranteed; nor do they form part of an offer or contract. If you require clarification on any points then please contact us, especially if you're traveling some distance to view. Please note that appliances and heating systems have not been tested and therefore no warranties can be given as to their good working order.