



GRAFTON SQUARE, SW4

£585,000

- Two double bedrooms
- Private terrace
- Separate kitchen
- Own front door
- Chain free
- Energy rating: F



2



1



1



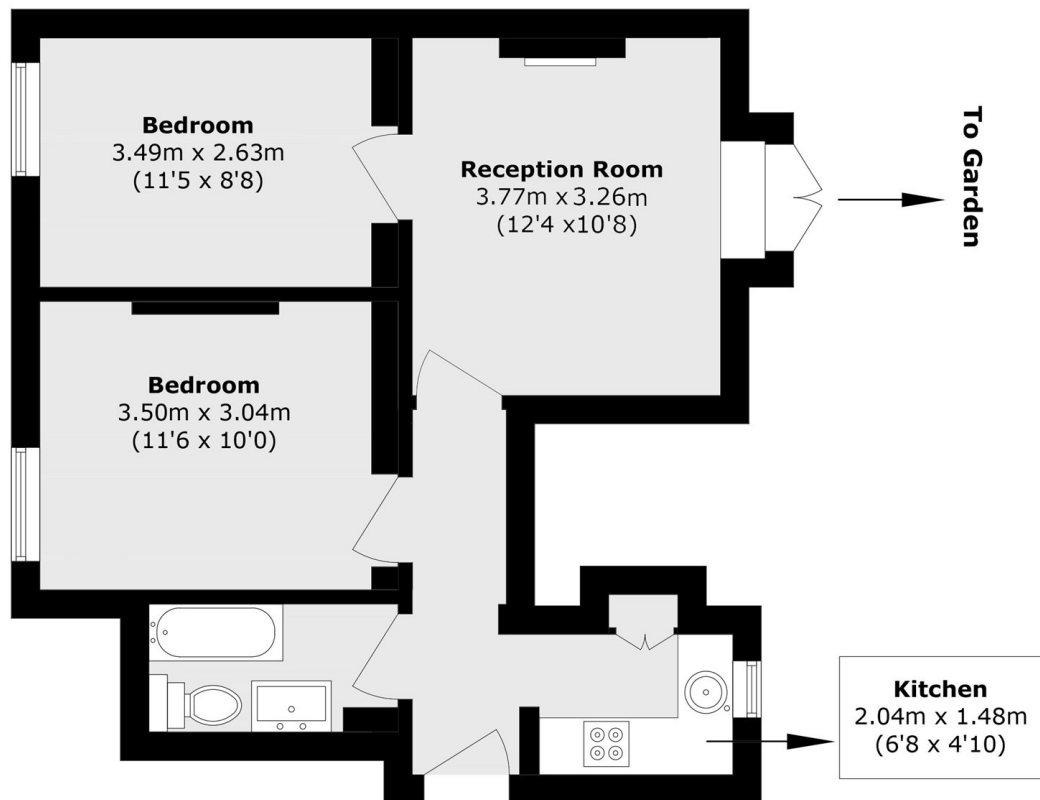
ABOUT THE HOME

Set within an imposing Grade II listed building is this well presented two double bedroom flat located in Clapham's most prestigious location.

Grafton Square is a gracious Victorian garden square in the heart of Clapham Old Town, with the wide open spaces of Clapham Common situated nearby. Alongside the neighbourhood shops, cafés and restaurants, local transport links include Clapham Common Underground station (Northern Line) and Wandsworth Road Overground station (Windrush line), along with excellent local bus services offering easy access into Clapham Junction, the City and West End.







Total area (approx.): 47.6 sq. m (512.3 sq. ft)

JACKSONS CLAPHAM

73 Abbeville Road, London,
SW4 9JN

Sales: 020 8487 3177

Lettings: 020 8487 3178

Energy Rating: F We aim to make our particulars both accurate and reliable. However they are not guaranteed; nor do they form part of an offer or contract. If you require clarification on any points then please contact us, especially if you're traveling some distance to view. Please note that appliances and heating systems have not been tested and therefore no warranties can be given as to their good working order.