



KEBLE STREET, SW17

£775,000

- Victorian Family Home
- Extension Potential (STPP)
- Beautiful Finish
- Open Plan Kitchen/Reception
- Excellent Transport Links
- Energy Rating: C





ABOUT THE HOME

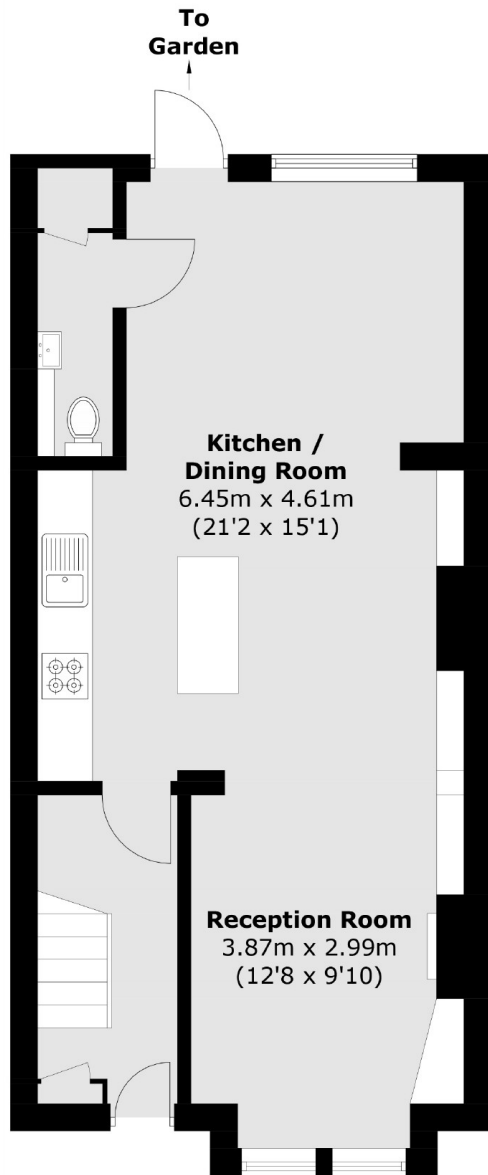
Located on a popular street in Earlsfield is this beautifully presented two double bedroom, Victorian family home.

This property offers a bright and spacious open plan kitchen reception with the benefit of a downstairs WC and access to a large private garden. On the first floor there are two double bedrooms and a good sized family bathroom.

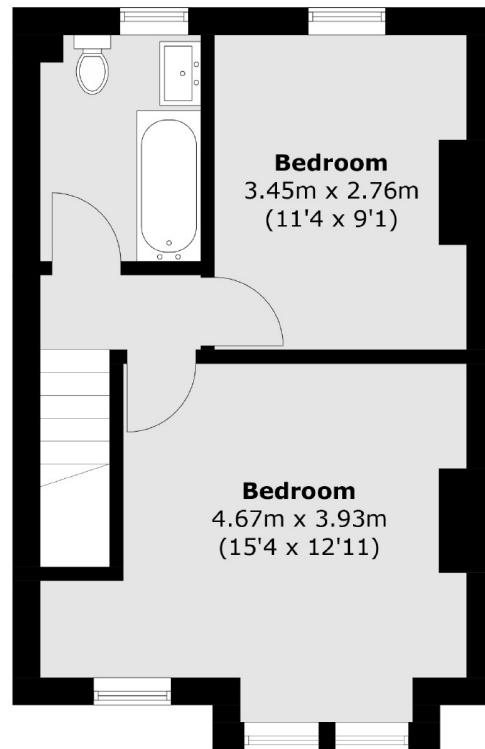
This property is situated in a highly desirable residential street with easy access to both Earlsfield mainline railway station and Tooting Broadway underground station. A plethora of restaurants, bars, leisure facilities are also within walking distance.







Ground Floor



First Floor

Total area (approx.): 82.2 sq. m (884.8 sq. ft)

JACKSONS EARLSFIELD

372-374 Garratt Lane,
Earlsfield, London, SW18 4ES
Sales: 020 8971 7979
Lettings: 020 8971 7070

Energy Rating: TBC We aim to make our particulars both accurate and reliable. However they are not guaranteed; nor do they form part of an offer or contract. If you require clarification on any points then please contact us, especially if you're traveling some distance to view. Please note that appliances and heating systems have not been tested and therefore no warranties can be given as to their good working order.