



HEATHFIELD SQUARE, SW18

£700,000

- Freehold house
- Three bedrooms
- Private garden
- Residents parking
- Communal green
- Energy rating: D





ABOUT THE HOME

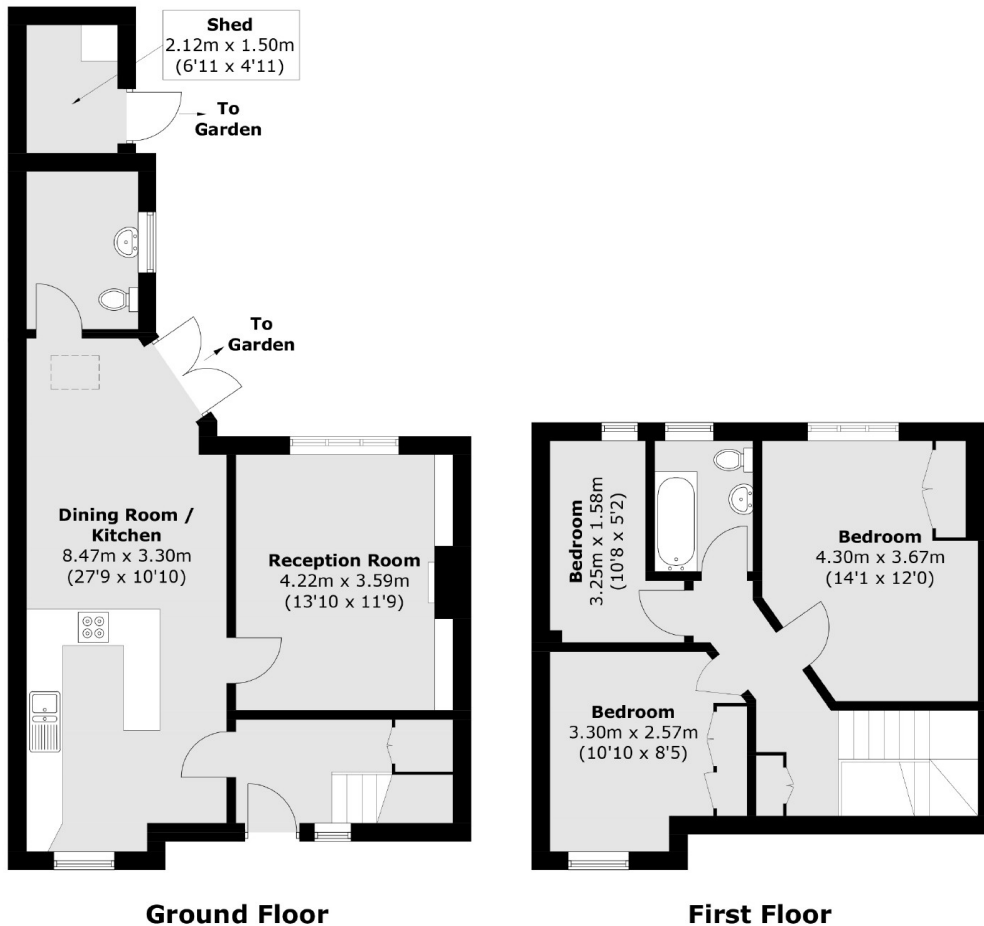
A three bedroom, semi-detached freehold characterful family home with a sizeable garden located on a quiet road.

This home features a mature, private front garden and is framed by beautiful wisteria climbing the front of the house. Upon entrance there is a generous entrance hall with ample storage, good size kitchen open plan to a dining area, utility room including a downstairs W/C, light and spacious reception room with a feature fireplace and access to a private garden. The garden has rear access and a sizeable storage shed. Upstairs are three bedrooms and a family bathroom. The landing is spacious and currently utilised as a home office. The property also benefits from resident's parking and loft space spanning the entire footprint of the house. There is extension potential, subject to planning permission.

Heathfield Square is a quiet and private residential road with a large open green space for the residents use, in the catchment area for some excellent Wandsworth primary schools. It lies within easy reach of Wandsworth Common, Earlsfield and Clapham Junction's mainline railway stations as well as the green open spaces of Wandsworth Common.







Total area (approx.): 98.7 sq. m (1,062.4 sq. ft)

Shed: 3.3 sq. m (35.5 sq. ft)

Total: 102.0 sq. m (1,097.9 sq. ft)

JACKSONS EARLSFIELD

372-374 Garratt Lane,
Earlsfield, London, SW18 4ES
Sales: 020 8971 7979
Lettings: 020 8971 7070

Energy Rating: D We aim to make our particulars both accurate and reliable. However they are not guaranteed; nor do they form part of an offer or contract. If you require clarification on any points then please contact us, especially if you're traveling some distance to view. Please note that appliances and heating systems have not been tested and therefore no warranties can be given as to their good working order.