



RAM STREET, SW18

£550,000

- Modern apartment complex
- Two double bedrooms
- Fantastic location
- High specification
- 24 hour concierge service
- Energy rating: B



2



1



1



ABOUT THE HOME

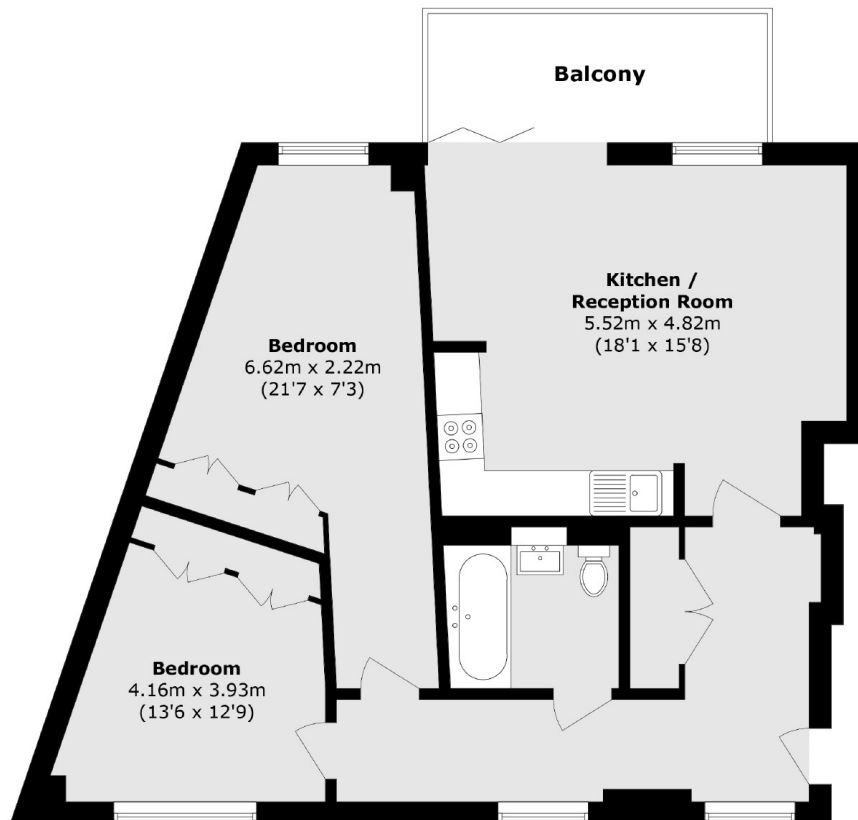
A beautifully presented two bedroom modern apartment with a large balcony and landscaped communal gardens, located within the heart of Wandsworth.

This property offers wonderful natural light throughout with high ceilings and full height windows, as well as very spacious accommodation. The property comprises of an entrance hall with built in storage leading to two very generous double bedrooms and an immaculately finished family bathroom. Both bedrooms provide ample built in wardrobe space. There is a spacious, open plan kitchen/dining area/reception room. The kitchen features an array of integrated appliances and the reception room offers an abundance of natural light flowing throughout. The property boasts a large balcony overlooking the communal gardens and has the added benefit of a 24 hour concierge service.

Dorset House is located just 0.4 miles from Wandsworth Town station, this development is located for ease of access to central London. As well as providing a range of restaurants, trendy cafés and the newly extended







Total area (approx.): 76.2 sq. m (820.2 sq. ft)

Balcony area (approx.): 7.7 sq. m (82.9 sq. ft)

JACKSONS EARLSFIELD

372-374 Garratt Lane,
Earlsfield, London, SW18 4ES
Sales: 020 8971 7979
Lettings: 020 8971 7070

Energy Rating: B We aim to make our particulars both accurate and reliable. However they are not guaranteed; nor do they form part of an offer or contract. If you require clarification on any points then please contact us, especially if you're traveling some distance to view. Please note that appliances and heating systems have not been tested and therefore no warranties can be given as to their good working order.