



MERTON ROAD, SW18

£700,000

- Two double bedrooms
- Open plan kitchen/living
- Private garden
- Beautifully finished
- Share of freehold
- Energy rating: C





ABOUT THE HOME

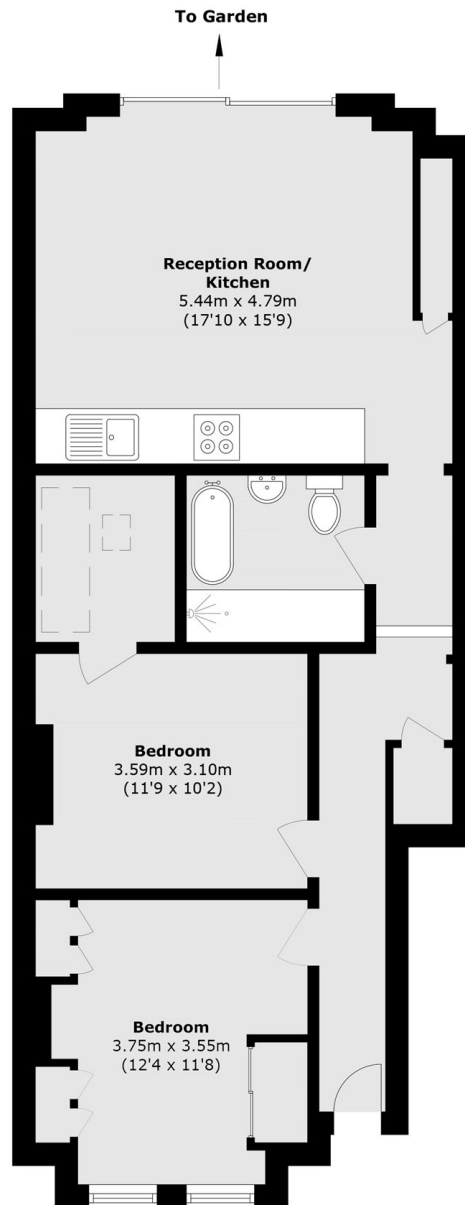
A beautifully designed and high specification, two double bedroom flat benefitting from a share of the freehold and it's own private garden.

The property features two generous double bedrooms to the front, both offering bespoke built in storage. The owners have added a nursery off the principal suite with a skylight, allowing natural light to fill the room, which could be used as an office or walk in wardrobe. There is a luxury bathroom boasting both shower and bath. At the rear of the property there is an impressive open plan kitchen / living room with ample space for dining and hosting. The room features glass sliding doors leading out on to the beautiful, low maintenance garden.

This is a highly desirable location, being within easy reach of Earlsfield mainline station (0.5 Miles) and Southfields underground station (0.7 Miles) offering fast train links to Central London for effortless commuting. The open green spaces of King Georges Park are also close by as well as an array of trendy coffee shops, boutique stores, bars, and restaurants for a vibrant lifestyle.







Total area (approx.): 71.1 sq. m (765.3 sq. ft)

JACKSONS EARLSFIELD

372-374 Garratt Lane,
Earlsfield, London, SW18 4ES
Sales: 020 8971 7979
Lettings: 020 8971 7070

Energy Rating: C We aim to make our particulars both accurate and reliable. However they are not guaranteed; nor do they form part of an offer or contract. If you require clarification on any points then please contact us, especially if you're traveling some distance to view. Please note that appliances and heating systems have not been tested and therefore no warranties can be given as to their good working order.