



STEERFORTH STREET, SW18

£500,000

- Victorian first floor flat
- Two double bedrooms
- Open plan kitchen/living
- Share of freehold
- Excellent location
- Energy rating: E



2



1



1



## ABOUT THE HOME

A beautifully presented, two double bedroom, Victorian conversion flat benefitting from a share of the freehold.

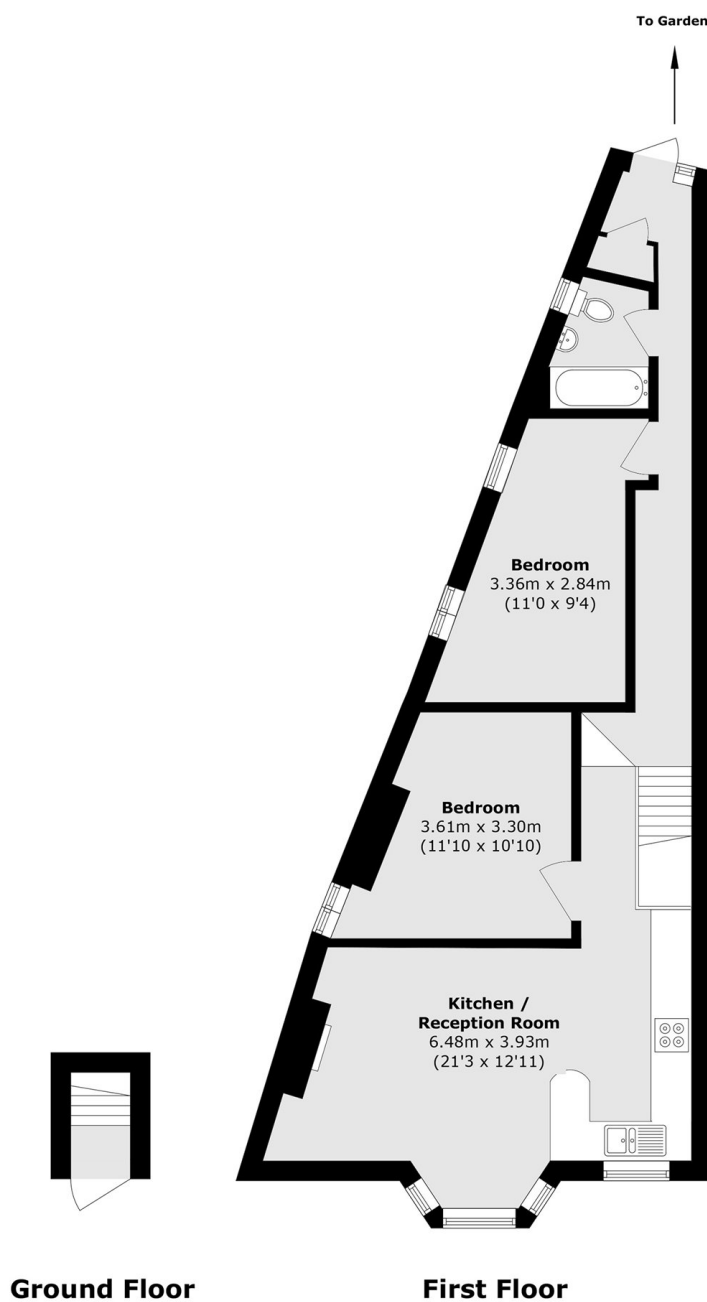
This end of terrace property is accessed via stairs leading to a bright first-floor landing. To the front is a spacious, full-width, open-plan kitchen and reception room, with a bay window filling the space with natural light. A generous double bedroom sits alongside. To the rear is a modern bathroom, a well-sized principal bedroom, and a practical utility room. Stairs lead down to a low maintenance garden. The property also benefits from being 0.3 miles from Earlsfield Mainline Station.

Steerforth Street is one of Earlsfield's highly sought after residential roads of similar Victorian buildings ideally located just 0.3 miles from Earlsfield Mainline Station, offering fast and reliable links into central London for effortless commuting. This location is very well served by independent cafés, excellent restaurants, and vibrant pubs all within close proximity.









Total area (approx.): 59.7 sq. m (642.6 sq. ft)

#### JACKSONS EARLSFIELD

372-374 Garratt Lane,  
Earlsfield, London, SW18 4ES  
Sales: 020 8971 7979  
Lettings: 020 8971 7070

Energy Rating: E We aim to make our particulars both accurate and reliable. However they are not guaranteed; nor do they form part of an offer or contract. If you require clarification on any points then please contact us, especially if you're traveling some distance to view. Please note that appliances and heating systems have not been tested and therefore no warranties can be given as to their good working order.